

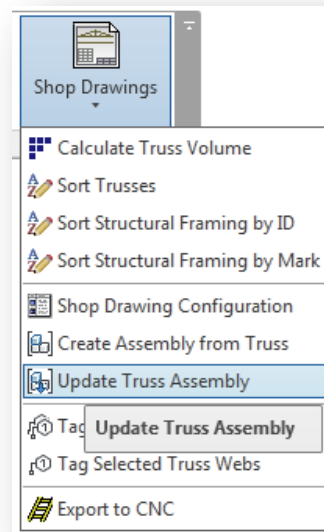
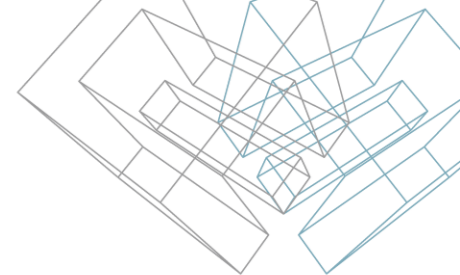
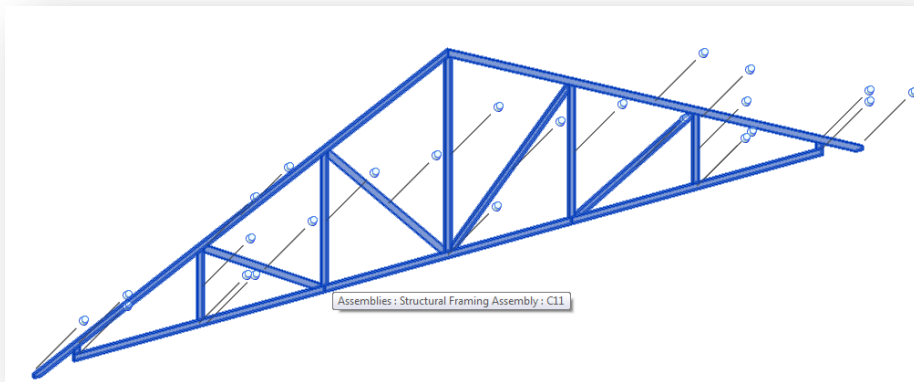


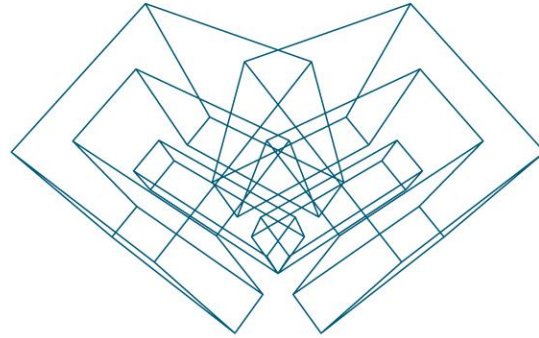
METAL FRAMING TRUSS+

Update Truss Assembly

Update Truss Assembly

- Select one or more truss assemblies in the project.
- Run *Update Truss Assembly* function directly from “Truss+” menu.
- Truss assemblies with predefined views will be updated.
- Some warning messages can appear, like in *Create Assembly from Truss* procedure.





AGA CAD Ltd

T: +370 618 55671 | E: support@aga-cad.com | W: www.aga-cad.com