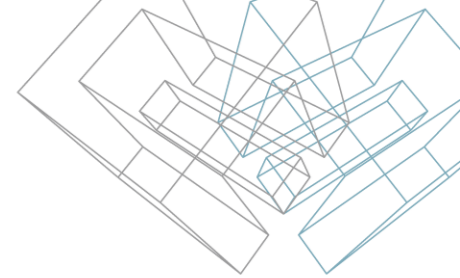




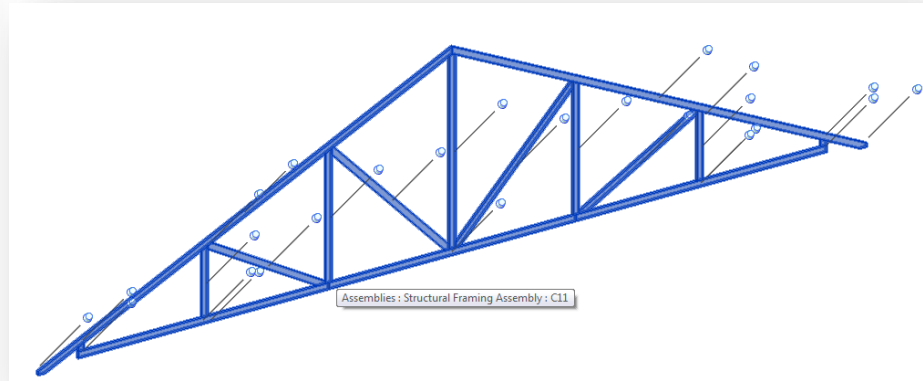
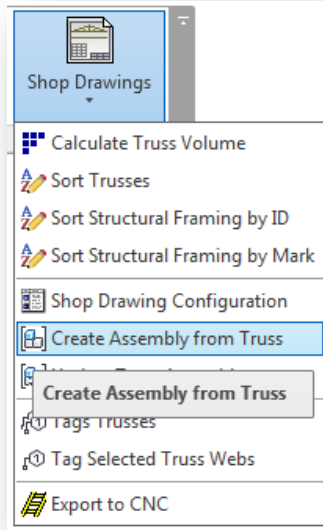
# METAL FRAMING TRUSS+

## Create Assembly from Truss

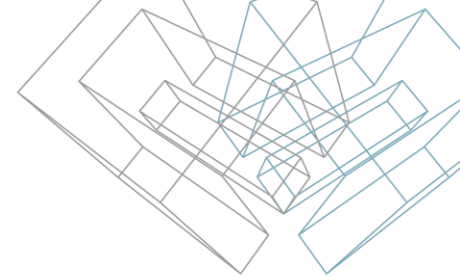
# Create Assembly from Truss



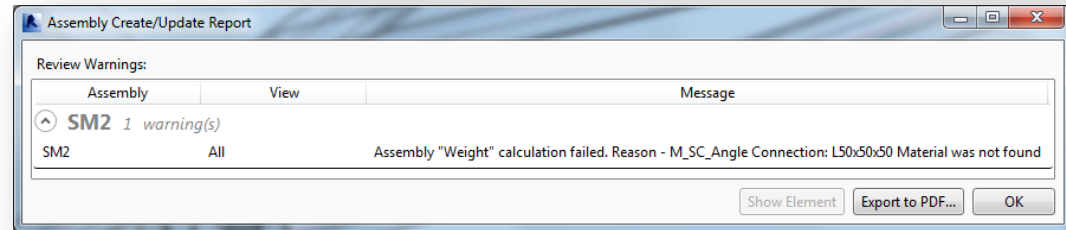
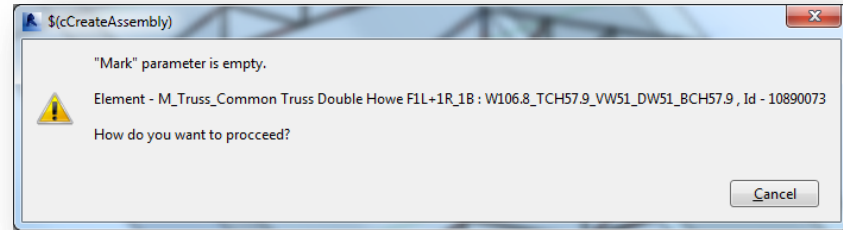
- Select in the project one or more sorted and numbered trusses.
- Run *Create Assembly from Truss* function directly from “Truss+” menu.
- Truss assemblies with predefined views are created if trusses are sorted and all truss elements have assigned material.

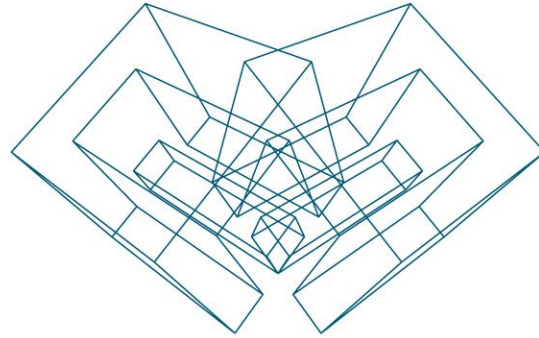


# Create Assembly from Truss



- User can get a warning message if truss mark parameter is empty.
- Software shows another message if it can't find material of some truss elements and can't calculate weight of the assembly.





AGA CAD Ltd

T: +370 618 55671 | E: [support@aga-cad.com](mailto:support@aga-cad.com) | W: [www.aga-cad.com](http://www.aga-cad.com)