

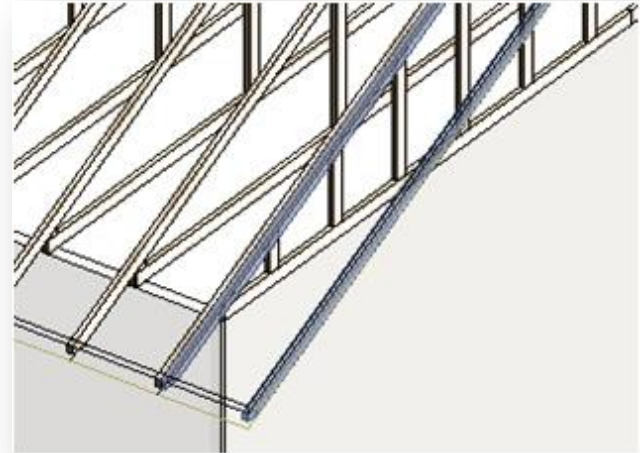
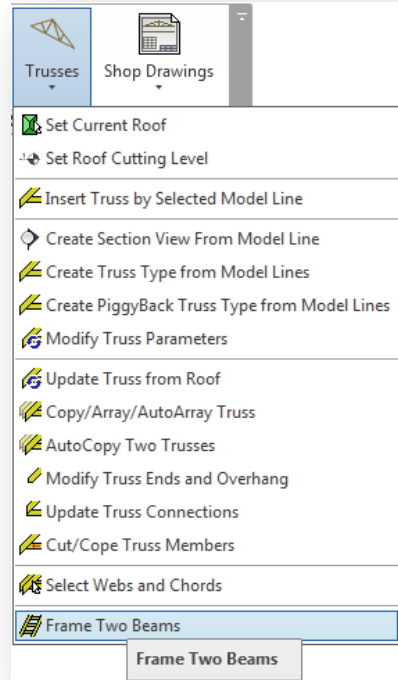


METAL FRAMING TRUSS+

Frame Two Beams

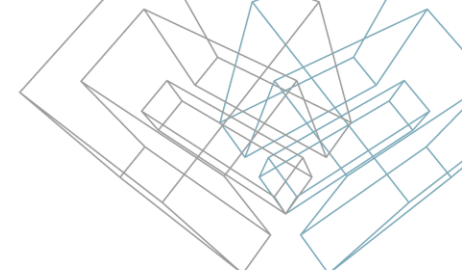
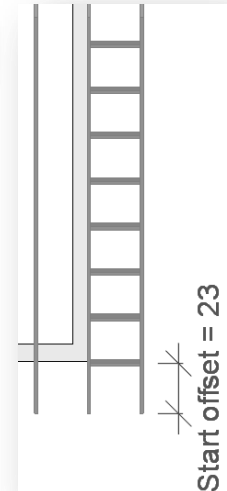
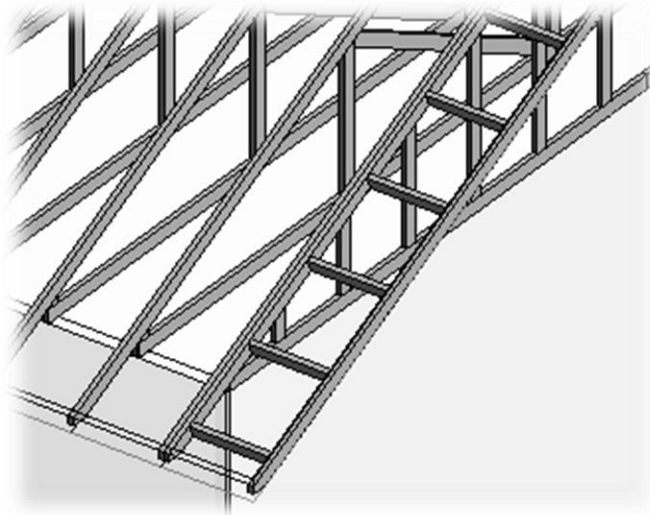
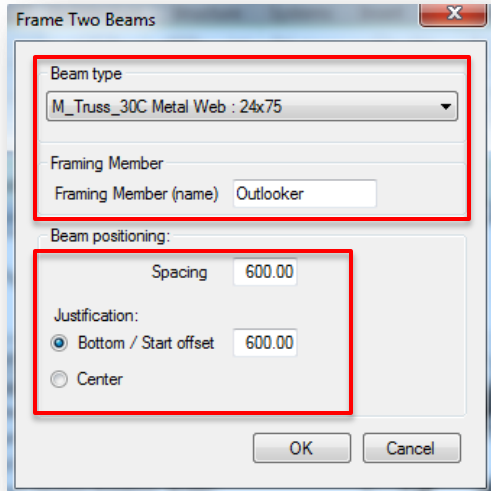
Frame Two Beams

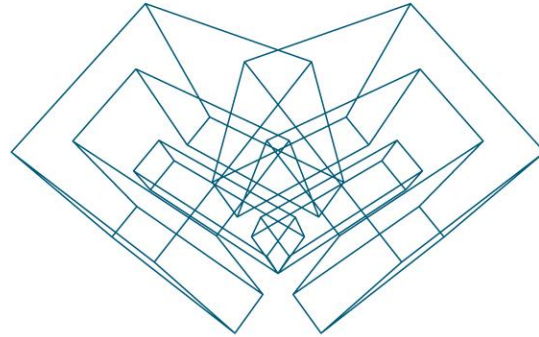
- Select two parallel Structural Framing elements.
- Select *Frame Two Beams* from Truss+ menu.



Frame Two Beams

- Select a beam type, write Framing Member name.
- Enter **Spacing** - a distance between beams.
- Enter **Bottom/Start offset** distance and click *OK*.





AGA CAD Ltd

T: +370 618 55671 | E: support@aga-cad.com | W: www.aga-cad.com