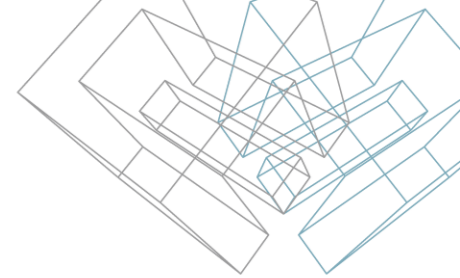




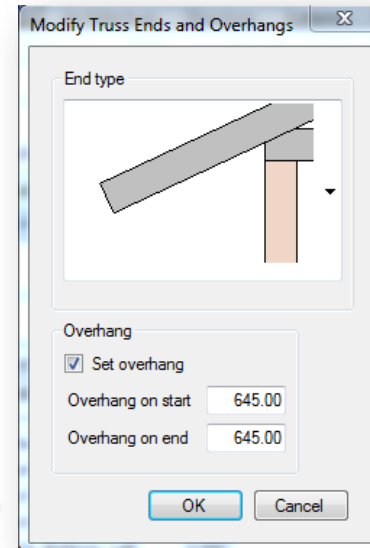
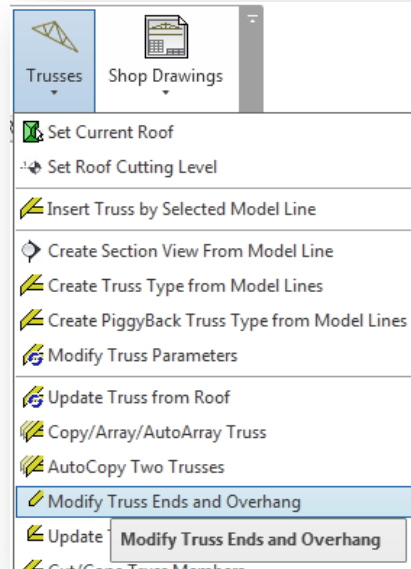
METAL FRAMING TRUSS+

Modify Truss Overhang Framing

Modify Truss Overhang Framing

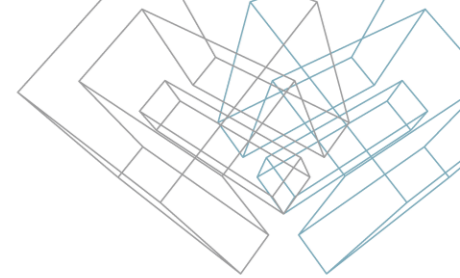
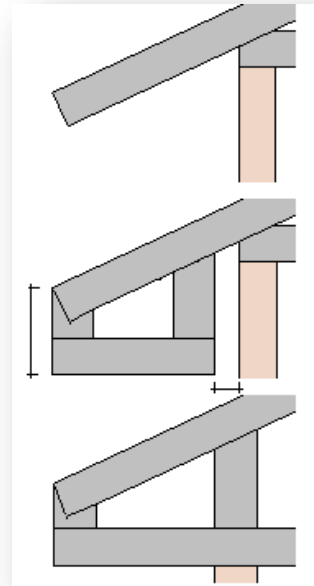
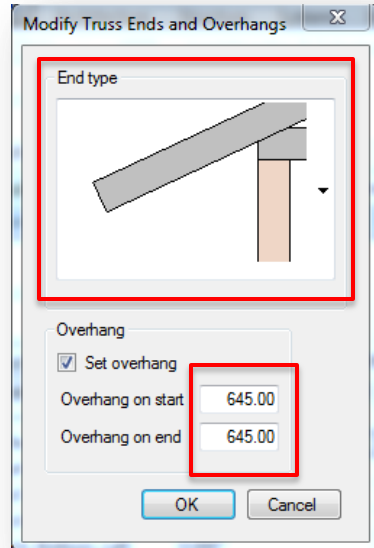


- Select one or more trusses to edit overhang framing.
- Choose *Modify Truss Ends and Overhang* directly from “Truss+” menu.



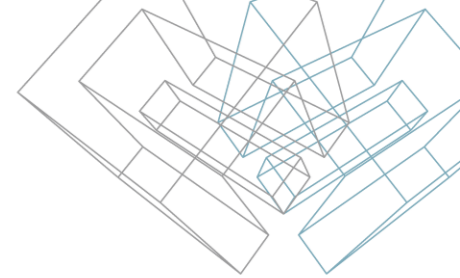
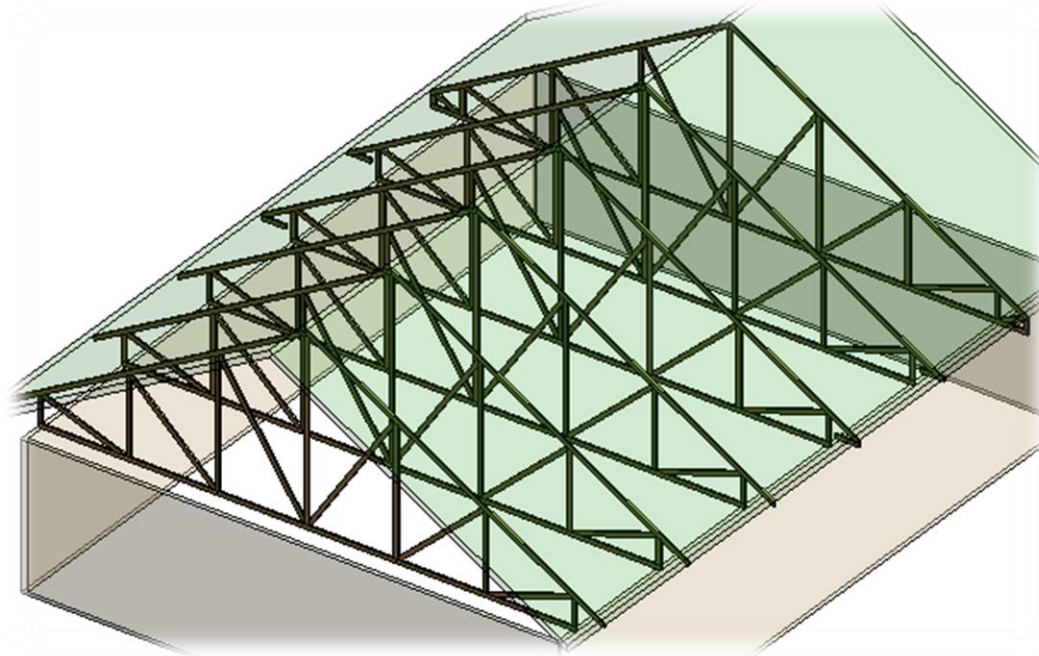
Modify Truss Overhang Framing

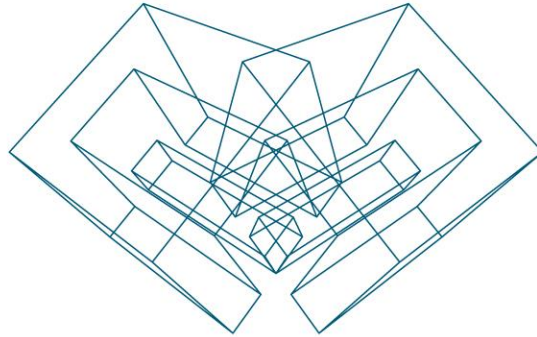
- Choose required truss overhang framing or select cantilevered truss end type.
- Edit overhang length only in special situations.



Modify Truss Overhang Framing

- Example of different types of truss overhang framing.





AGA CAD Ltd

T: +370 618 55671 | E: support@aga-cad.com | W: www.aga-cad.com