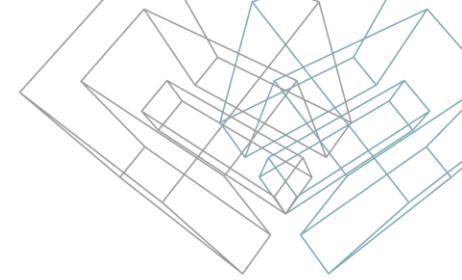




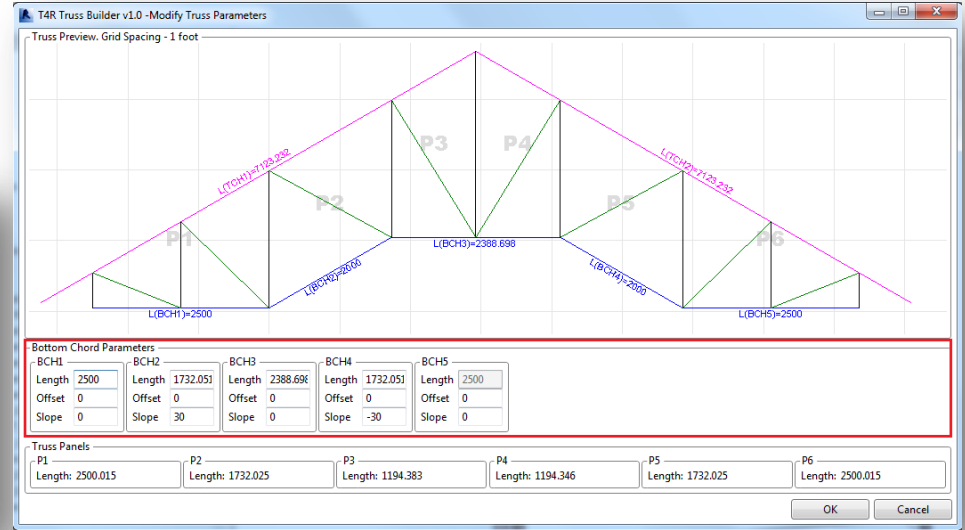
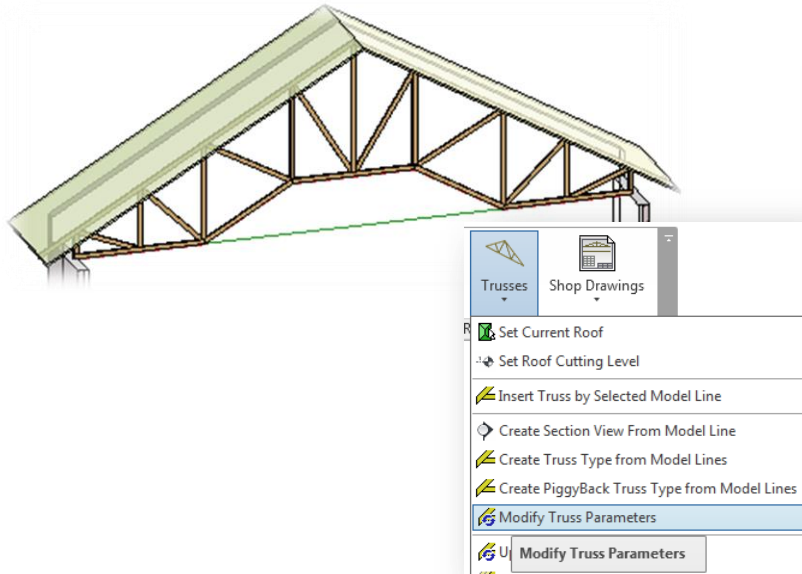
METAL FRAMING TRUSS+

Modify Truss Parameters

Modify Truss Parameters

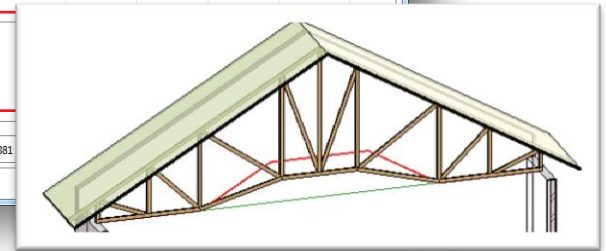
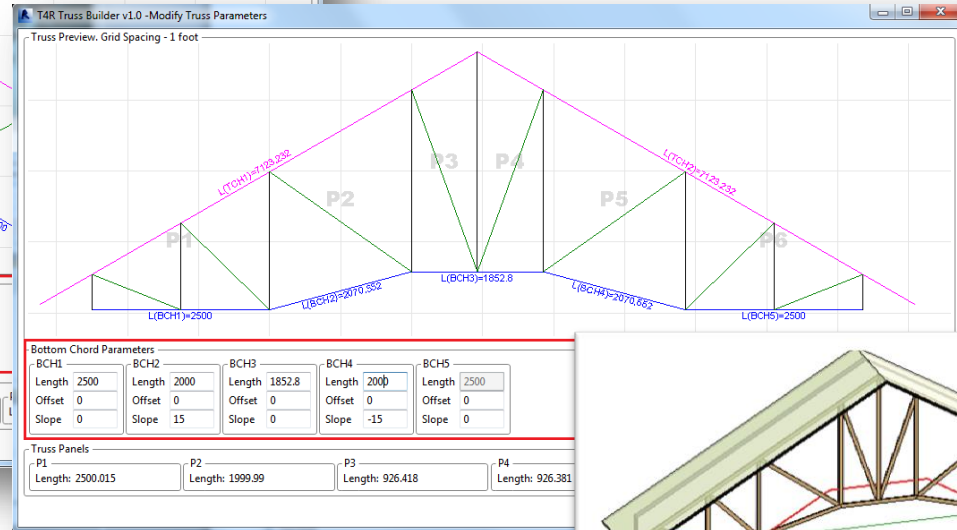
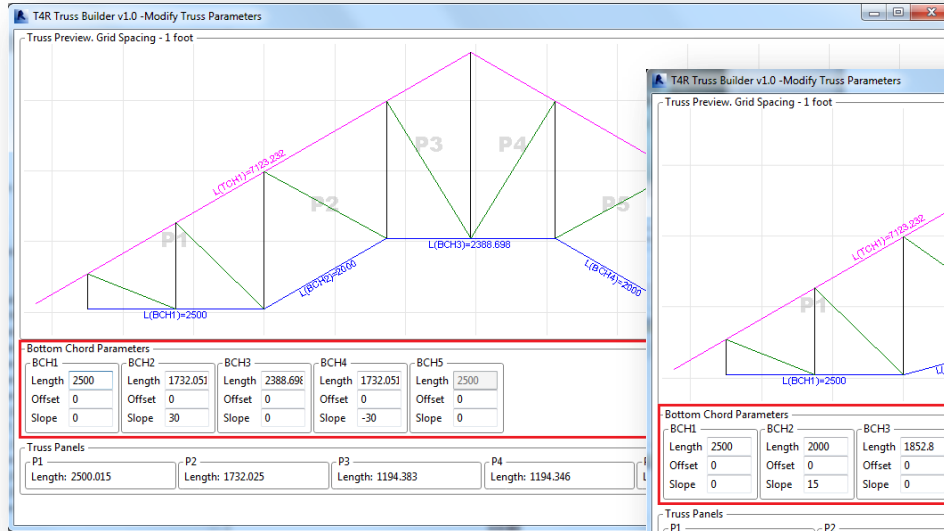


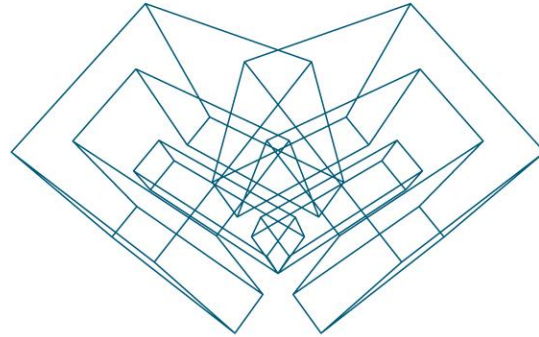
- Select a truss which is created with the **Truss Builder** and run the **Modify Truss Parameters** function directly from “Truss+” menu.



Modify Truss Parameters

- Modify bottom chord parameters in the graphical window of *Truss Builder*.





AGA CAD Ltd

T: +370 618 55671 | E: support@aga-cad.com | W: www.aga-cad.com