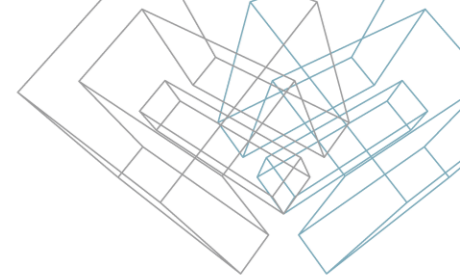




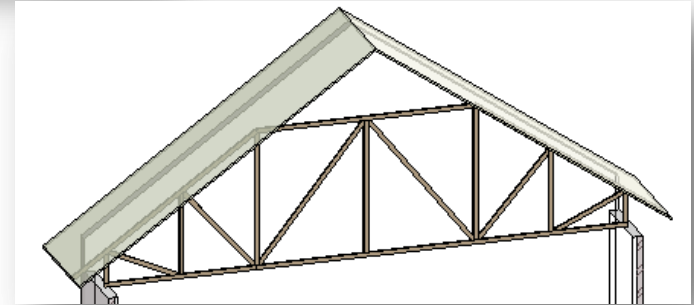
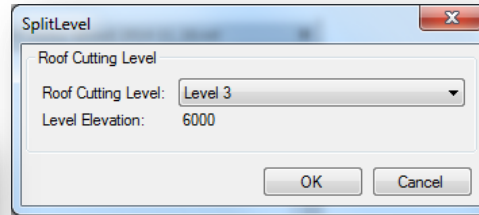
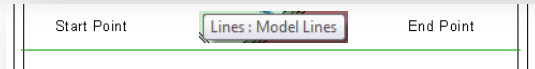
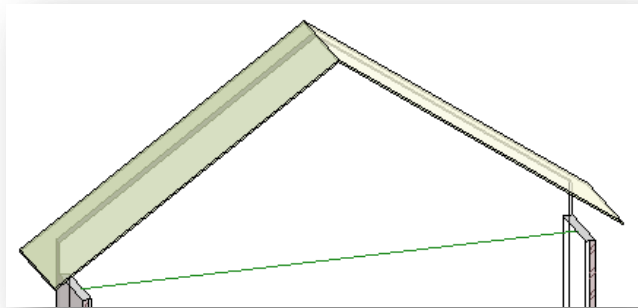
METAL FRAMING TRUSS+

Create Piggy Back Truss Type by Model Lines

Create Piggy Back Truss Type by Model Line

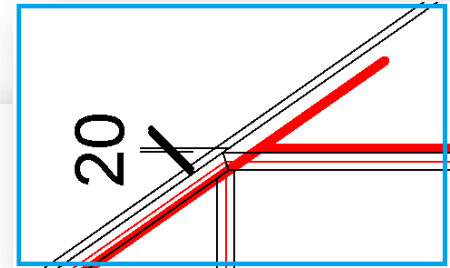
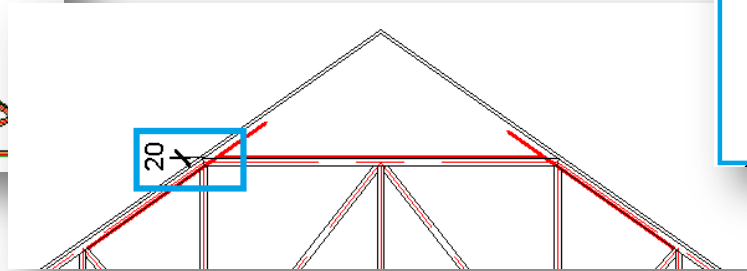
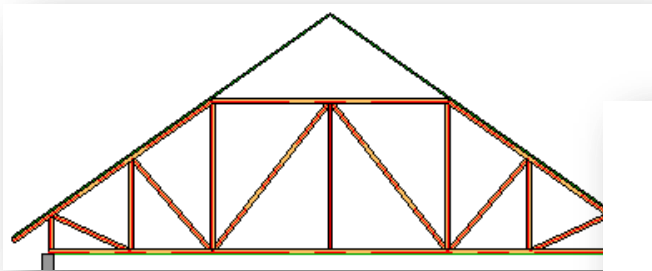
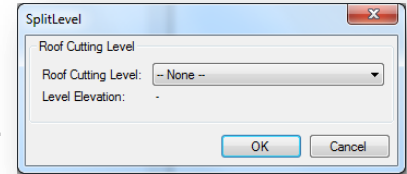
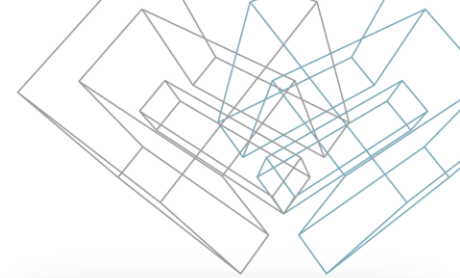


- First of all, you need to insert or create a new main truss type by Model line when Roof Cutting Level is set to the corresponding level.



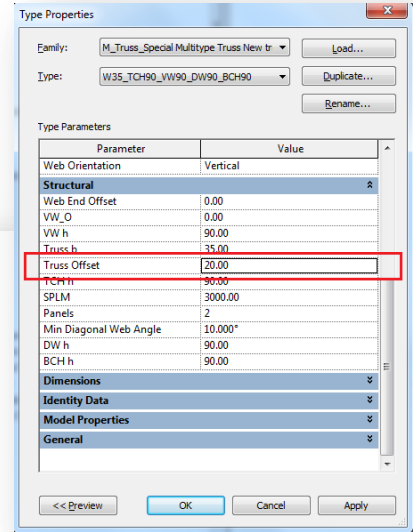
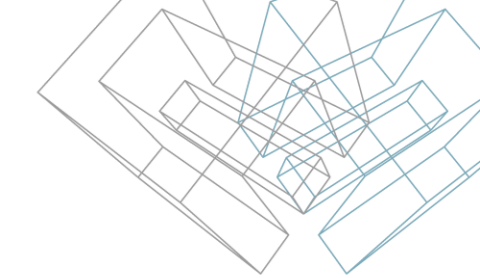
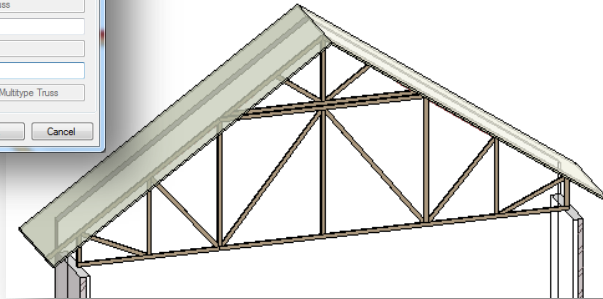
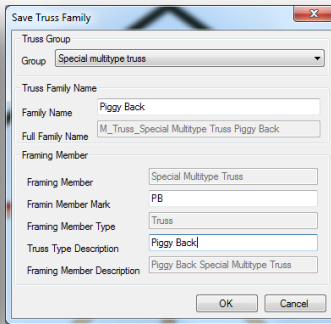
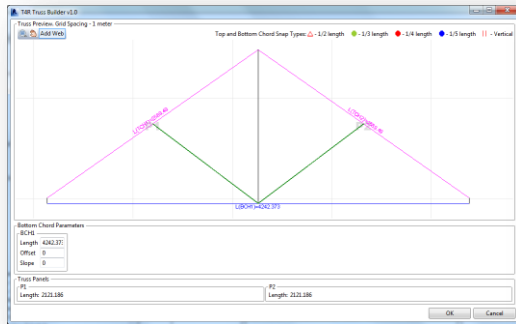
Create Piggy Back Truss Type by Model Line

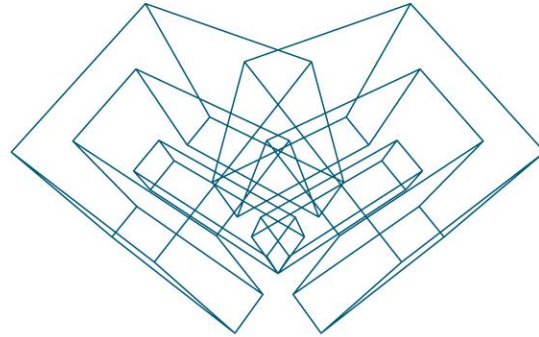
- Select Model line and run *Create Section View by Model Line*.
- Set Roof Cutting Level to 'None'.
- Draw Model line for a piggy back truss with an offset from top chord of main truss if required.
- Help lines on bottom face of sloped top chords allow drawing Model line correctly.
- Select Model line and run the *Create Piggy Back Truss Type by Model Line* function directly from "Truss+" menu.



Create Piggy Back Truss Type by Model Line

- Draw webs in the graphical window of **Truss Builder**.
- Select Group, write new truss family name and fill values of other parameters.
- New truss will be created in the place of Model line. Section view will be automatically deleted.
- Edit type parameter of a new created piggy back truss - **Truss Offset**.





AGA CAD Ltd

T: +370 618 55671 | E: support@aga-cad.com | W: www.aga-cad.com