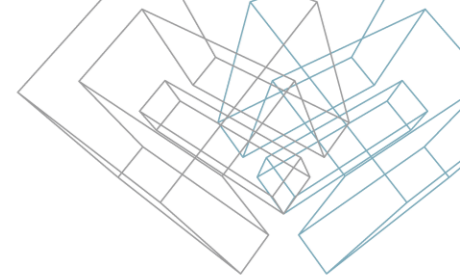




METAL FRAMING TRUSS+

Modify Truss Inserted by Model Line

Modify Truss Inserted by Model Line



- Select a truss to modify parameters (attic truss in this case).
- All changeable (main) parameters are under Constraints group.
- Software controls many parameters automatically (red mark), but some trusses of special type have own special parameters (green mark) which must be configured by User.

Properties

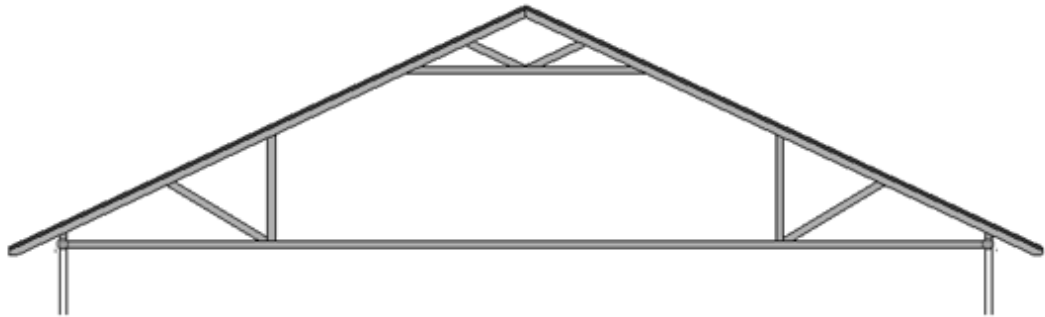
M_Truss_Common Truss Attic Room_1L+1R
W35_TCH90_VW90_DW90_BCH90

Structural Trusses (1) Edit Type

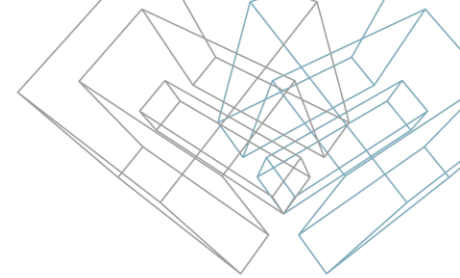
Constraints

Work Plane	<not associated>
Reference Level	Level 2
Start Level Offset	45.00
End Level Offset	45.00
Overhang Framing Start	<input type="checkbox"/>
Overhang Framing End	<input type="checkbox"/>
Cantilever	<input type="checkbox"/>
Attic Wall Height Right	1270.00
Attic Wall Height Left	1270.00
Attic Ceiling Offset	2000.00
Attic Ceiling Offset_Real	2090.00

Construction



Modify Truss Inserted by Model Line



- An example of Double Pitch & Gambrel attic truss.

Properties

M_Truss_Common Truss Double Pitch&Gambrel Attic_2L+2R
W35_TCH90_VW90_DW90_BCH90

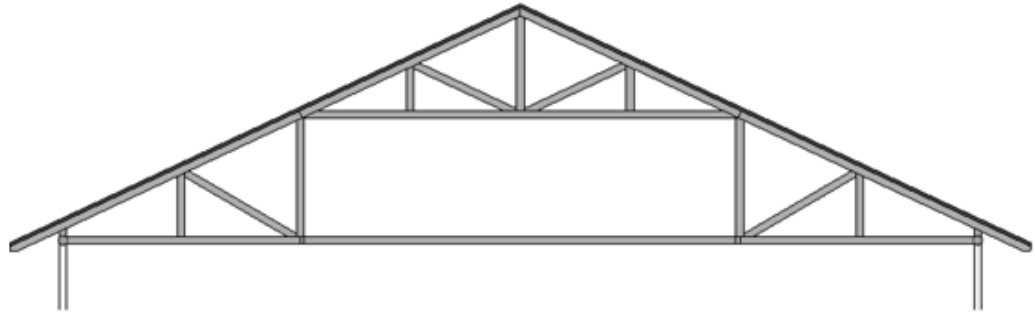
Structural Trusses (1) Edit Type

Constraints

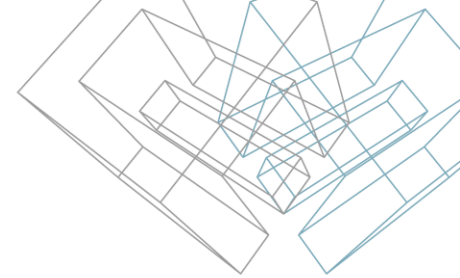
Work Plane	< not associated >
Reference Level	Level 2
Start Level Offset	45.00
End Level Offset	45.00
Overhang Framing Start	<input type="checkbox"/>
Overhang Framing End	<input type="checkbox"/>
Cantilever	<input type="checkbox"/>
Attic Ceiling Offset	1524.00
Attic Ceiling Offset_Real	1524.00

Construction
Graphics
Mechanical
Structural

[Properties help](#) Apply



Modify Truss Inserted by Model Line



- An example of Raised vault truss.

Properties

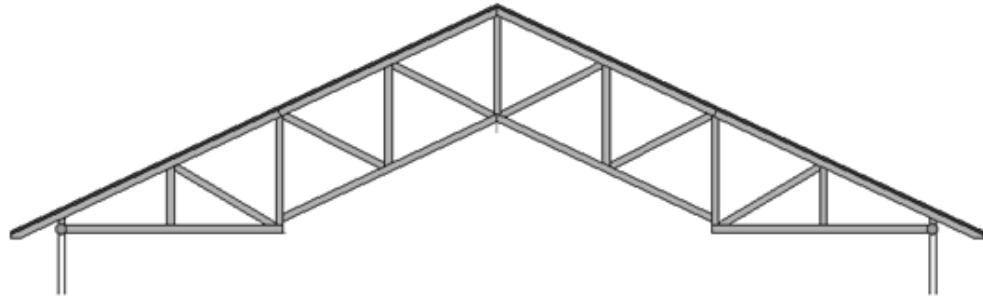
M_Truss_Common Truss Raised Vault_2L+2R
W35_TCH90_VW90_DW90_BCH90

Structural Trusses (1) Edit Type

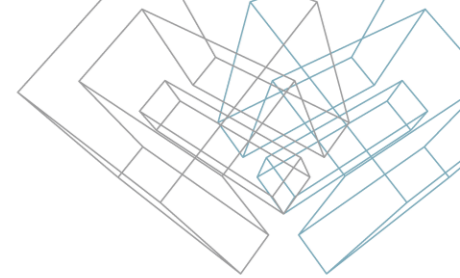
Constraints

Work Plane	<not associated>
Reference Level	Level 2
Start Level Offset	45.00
End Level Offset	45.00
Vault Right Horizontal Offset	0.00
Vault Left Horizontal Offset	0.00
Raised Vault	<input checked="" type="checkbox"/>
Overhang Framing Start	<input type="checkbox"/>
Overhang Framing End	<input type="checkbox"/>
Ceiling or Vault Offset	120.00
Cantilever	<input type="checkbox"/>
Attic	<input type="checkbox"/>

Construction



Modify Truss Inserted by Model Line



- An example of Tray ceiling truss.

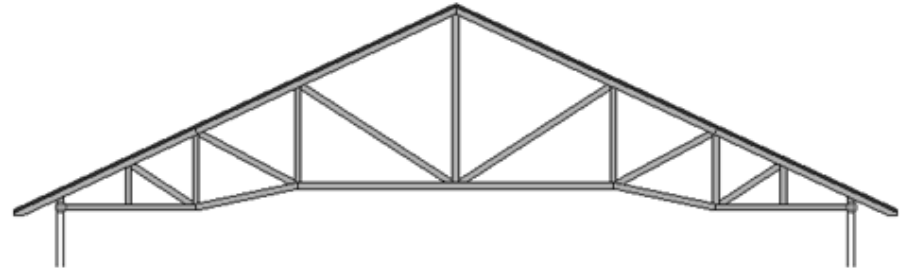
Properties

M_Truss_Common Truss Tray Ceiling_2L+2R
W35_TCH90_VW90_DW90_BCH90

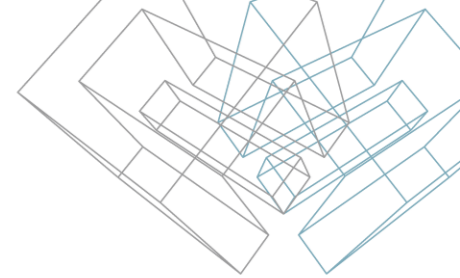
Structural Trusses (1) Edit Type

Constraints

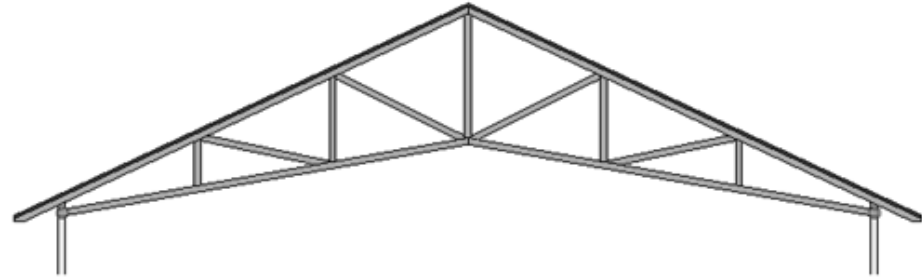
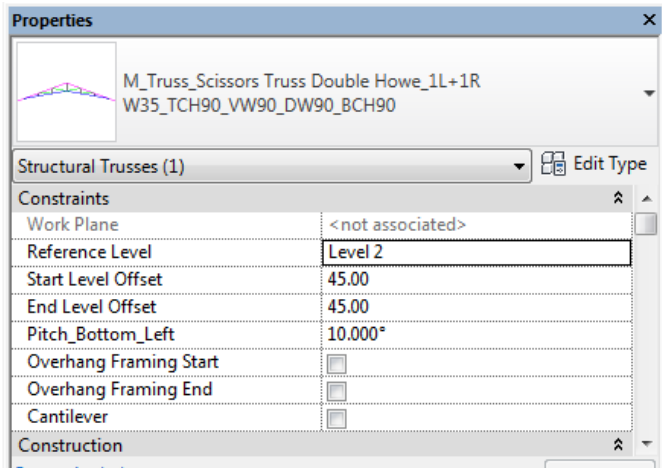
Work Plane	<not associated>
Reference Level	Level 2
Start Level Offset	45.00
End Level Offset	45.00
Vault Pitch_Right	12.000°
Vault Pitch_Left	12.000°
Vault Right Vertical Offset	0.00
Vault Left Vertical Offset	0.00
Tray Ceiling Offset	304.80
Tray Ceiling Right Horizontal Offset	1905.00
Tray Ceiling Left Horizontal Offset	1905.00
Overhang Framing Start	<input type="checkbox"/>
Overhang Framing End	<input type="checkbox"/>



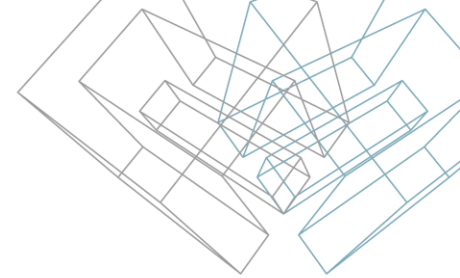
Modify Truss Inserted by Model Line



- Scissors truss example.



Modify Truss Inserted by Model Line



- Gable truss example.

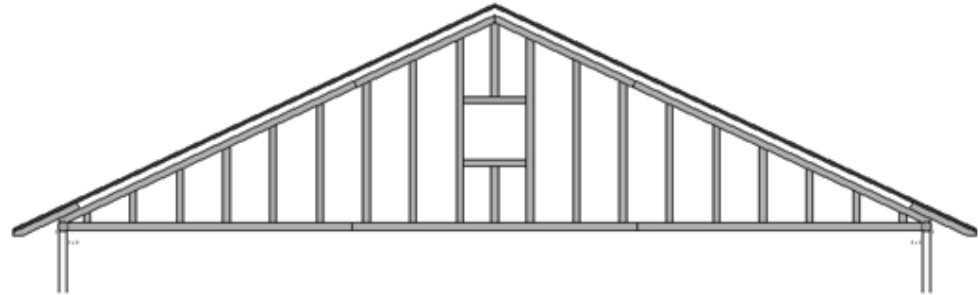
Properties

M_Truss_Gable Truss Common&Gambrel_Drop Top_2L+2R
W35_TCH90_VW90_DW90_BCH90

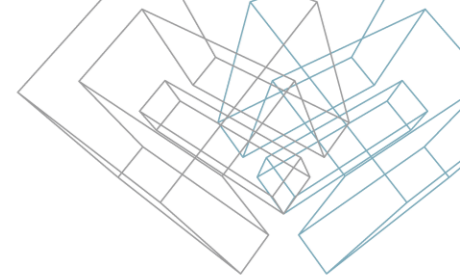
Structural Trusses (1) Edit Type

Constraints

Work Plane	<not associated>
Reference Level	Level 2
Start Level Offset	45.00
End Level Offset	45.00
Window	<input checked="" type="checkbox"/>
Studs Aligned with King Stud or Ri...	<input checked="" type="checkbox"/>
Sill Height	812.80
Overhang Framing Start	<input type="checkbox"/>
Overhang Framing End	<input type="checkbox"/>
Opening Width	812.80
Opening	<input checked="" type="checkbox"/>
Head Height	1625.60
Drop Top Chord	<input checked="" type="checkbox"/>
Cantilever	<input type="checkbox"/>




Modify Truss Inserted by Model Line



- Mono pitch truss example.

Properties



M_Truss_Mono Pitch Truss Double Howe_1L
W35_TCH90_VW90_DW90_BCH90

Structural Trusses (1) Edit Type

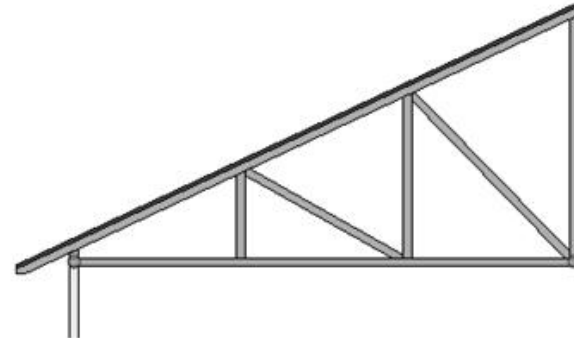
Constraints

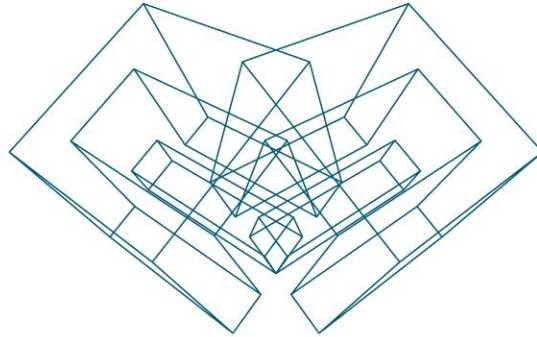
Work Plane	< not associated >
Reference Level	Level 2
Start Level Offset	45.00
End Level Offset	45.00
Pitch_Bottom_Left	0.000°
Overhang Framing Start	<input type="checkbox"/>
Cantilever	<input type="checkbox"/>

Construction

Pitch L	25.000°
---------	---------

[Properties help](#) Apply





AGA CAD Ltd

T: +370 618 55671 | E: support@aga-cad.com | W: www.aga-cad.com