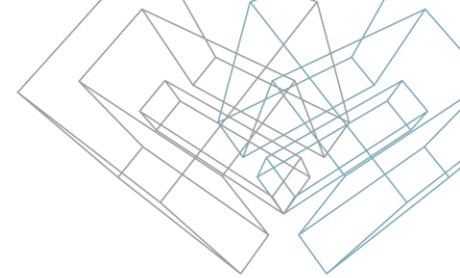


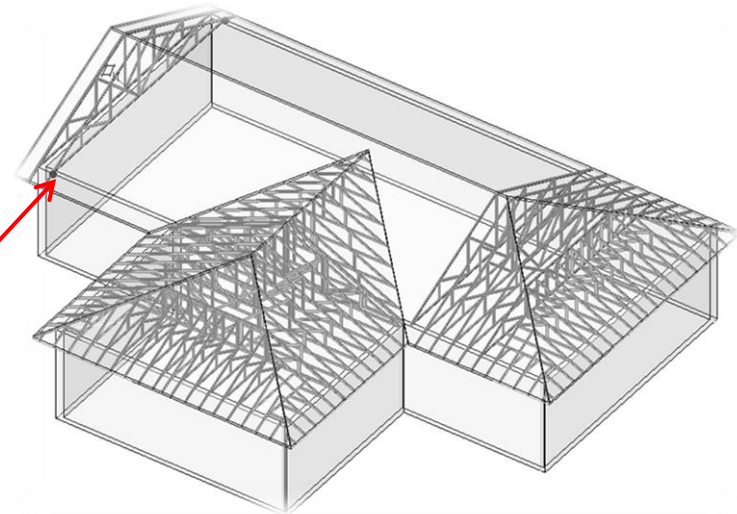
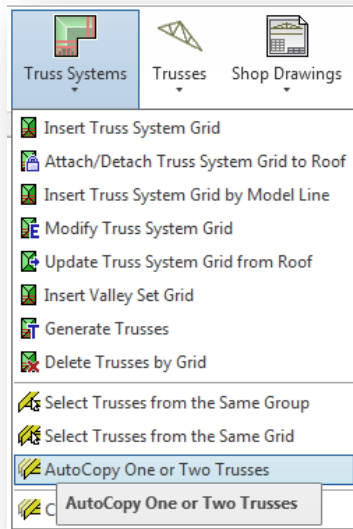
METAL FRAMING TRUSS+  
AutoCopy One or Two Trusses

# AutoCopy One or Two Trusses



One truss can be auto copied only when Roof and Truss System Grid exists. The *AutoCopy One Truss* function works for common trusses only.

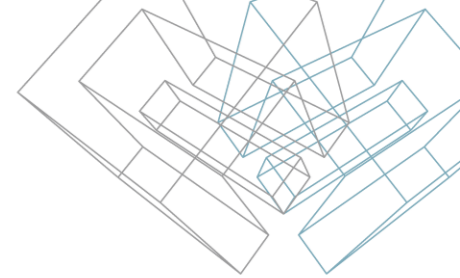
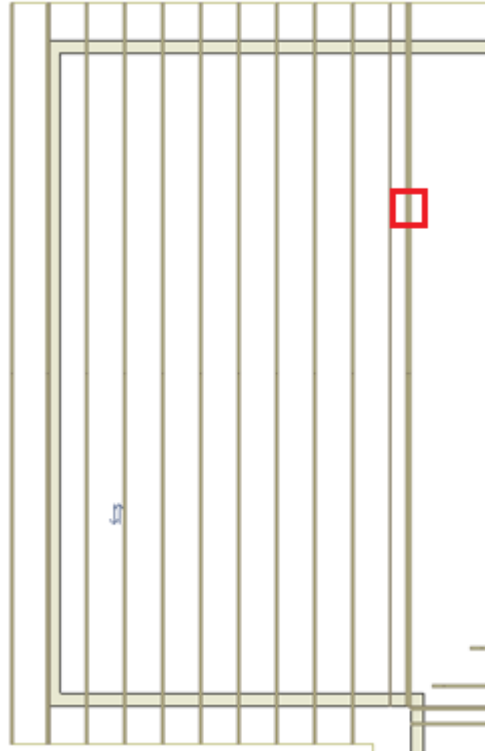
- Select **one** truss you want to copy.
- Choose *AutoCopy One or Two Trusses* from “Truss+” menu.



# AutoCopy One or Two Trusses

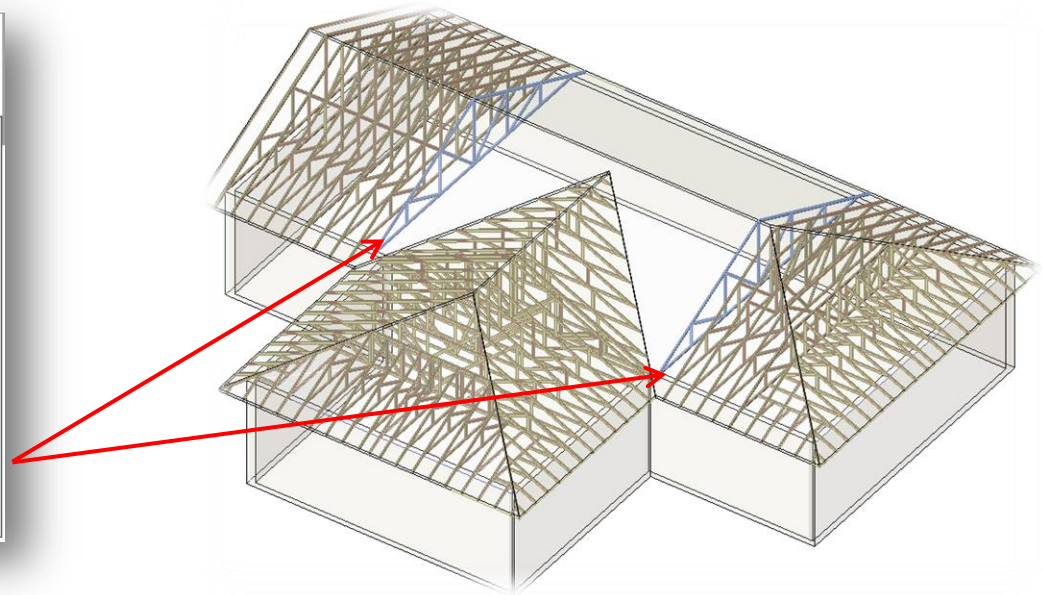
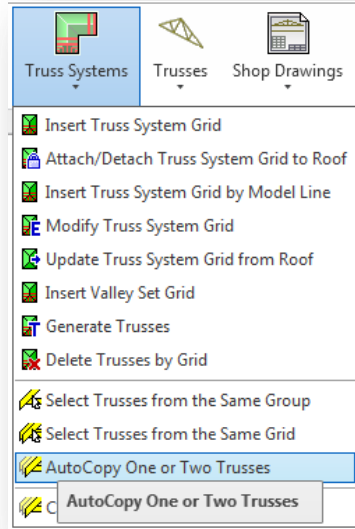
- Truss is copied as it is defined in the truss system grid configuration.

First girder ply	<input type="text" value="1"/>
<input checked="" type="checkbox"/> Second girder ply	<input type="text" value="2"/>



# AutoCopy One or Two Trusses

- Select **two** trusses and choose *AutoCopy One or Two Trusses* from “Truss+” menu.

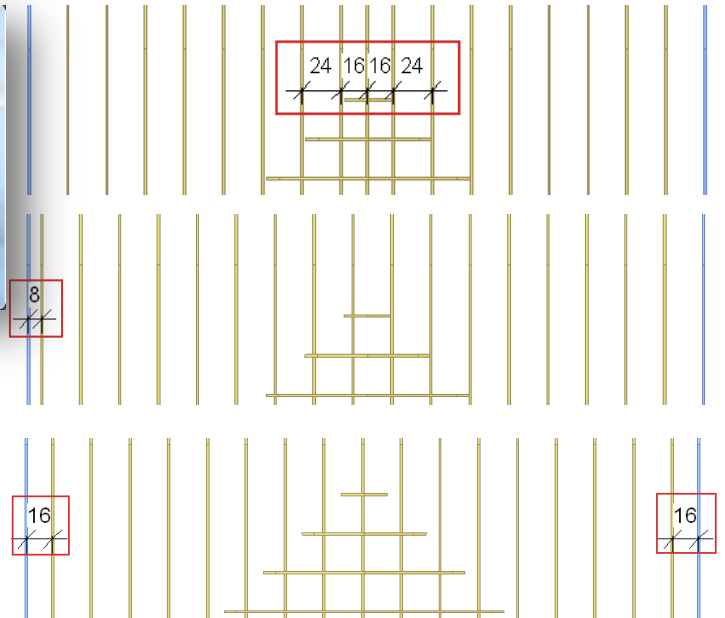
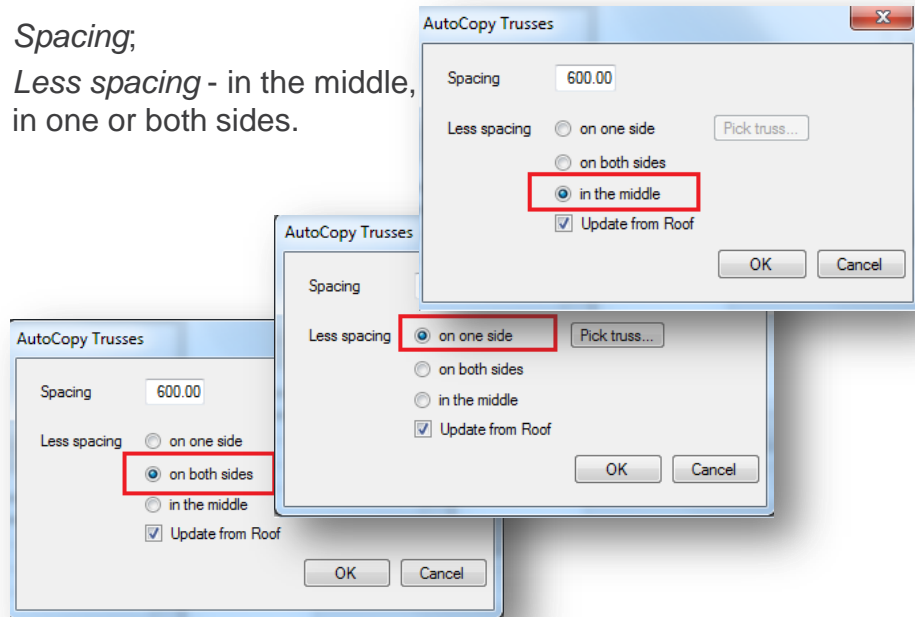




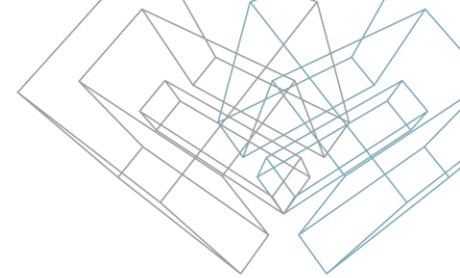
# AutoCopy One or Two Trusses

In the coming dialog the user has to define AutoCopy parameters:

- *Spacing*;
- *Less spacing* - in the middle, in one or both sides.

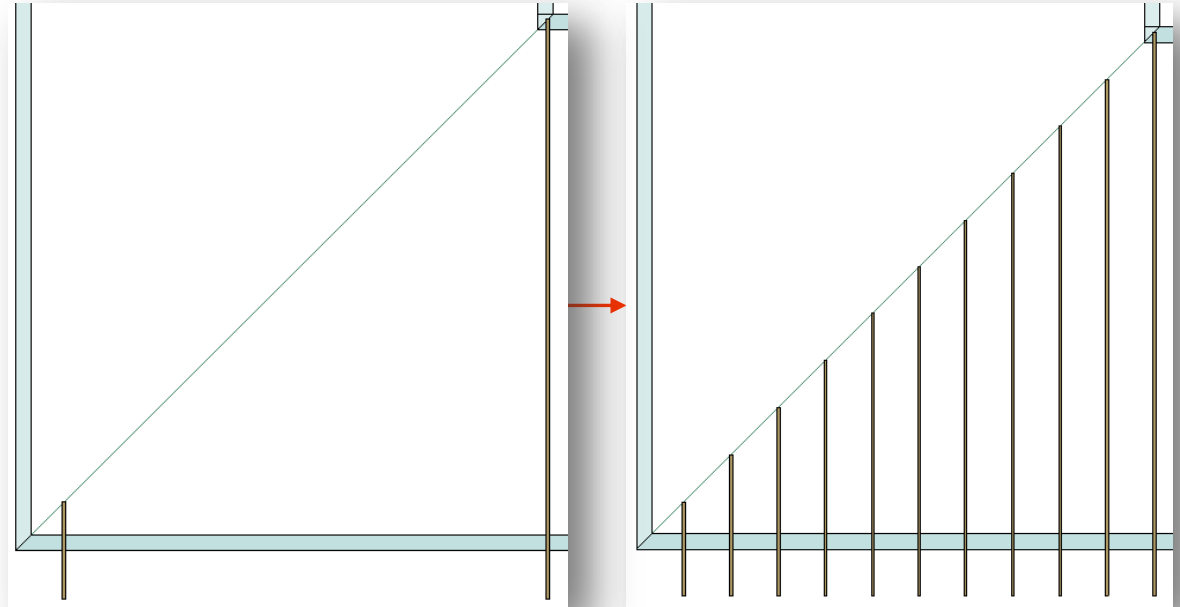


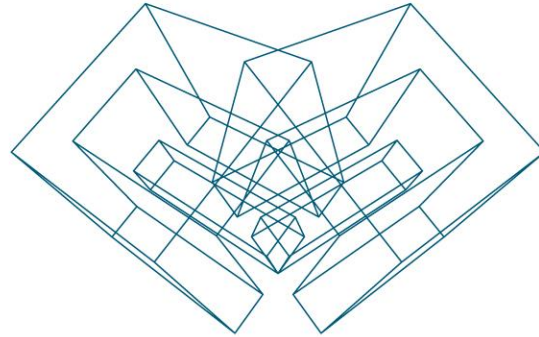
# AutoCopy One or Two Trusses



*AutoCopy Two Trusses* function can be used also when Truss system grid does not exist.

- Select **two** trusses and choose *AutoCopy One or Two Trusses* from “Truss+” menu.
- Define AutoCopy parameters.





AGA CAD Ltd

T: +370 618 55671 | E: [support@aga-cad.com](mailto:support@aga-cad.com) | W: [www.aga-cad.com](http://www.aga-cad.com)