

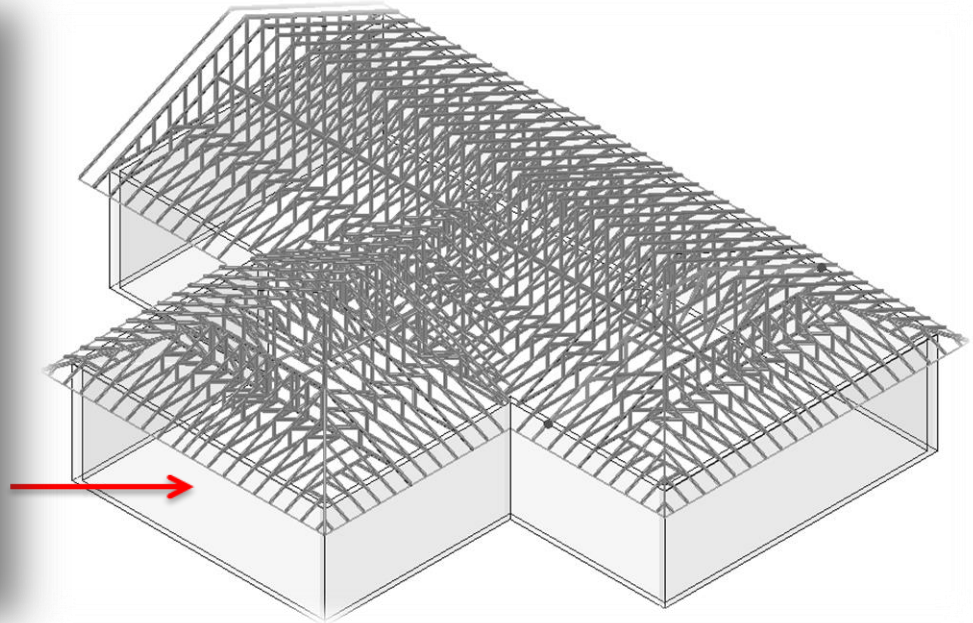
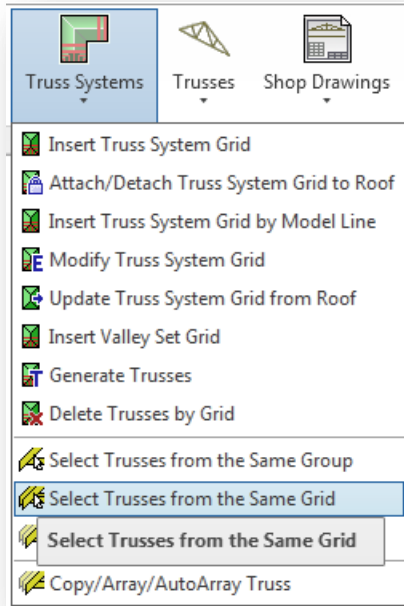


METAL FRAMING TRUSS+

Select Trusses from the Same Grid

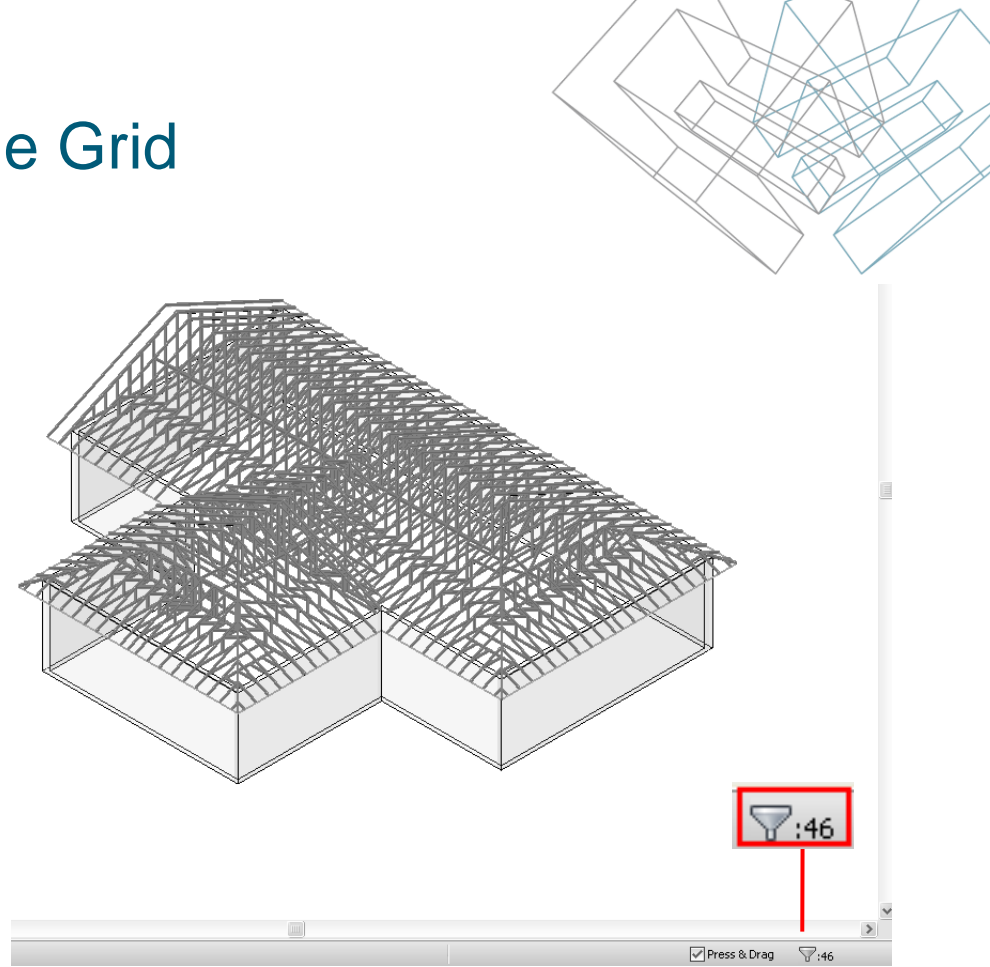
Select Trusses from the Same Grid

- Select Truss from the grid.
- Choose *Select Trusses from the Same Grid* function from “Truss+” menu.

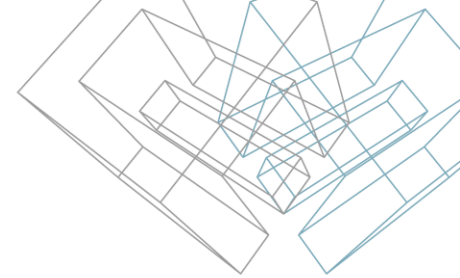


Select Trusses from the Same Grid

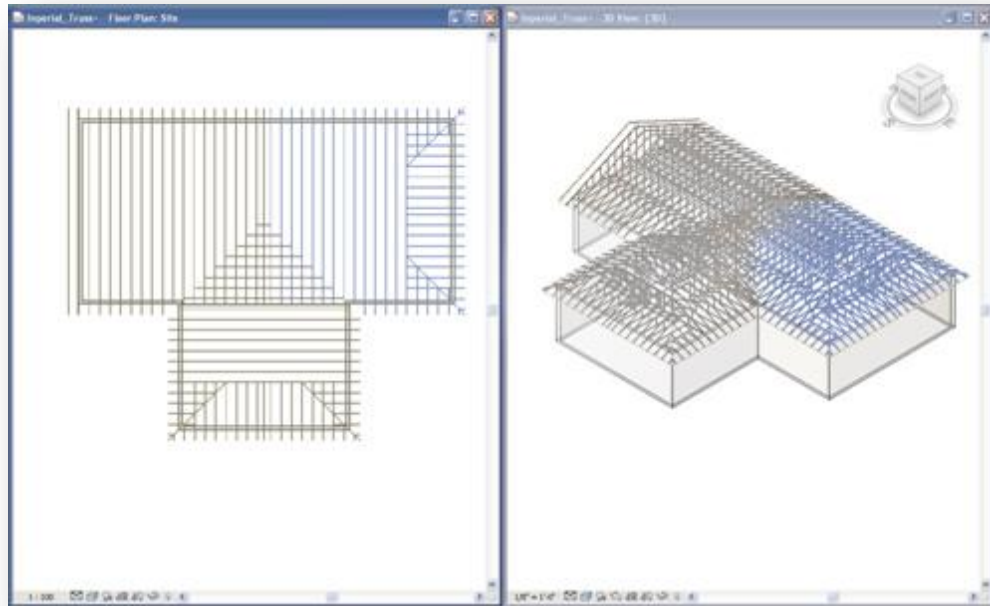
- The selected trusses from the same grid are not visible because of Revit bug.
- The sign showing that trusses are selected is the filter which shows the number of selected elements.
(The filter is in the right down corner of the screen.)

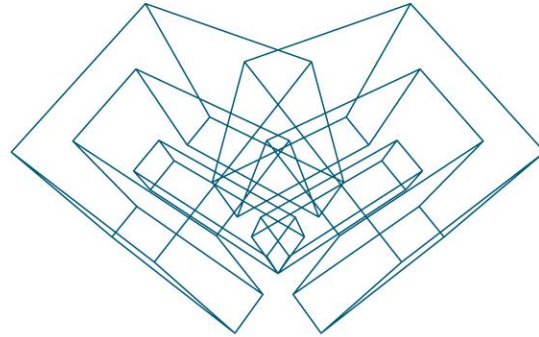


Select Trusses from the Same Grid



- There is another way to see the selected trusses.
- Click *Tile Windows* (another view should open) and make one of the views active.





AGA CAD Ltd

T: +370 618 55671 | E: support@aga-cad.com | W: www.aga-cad.com