



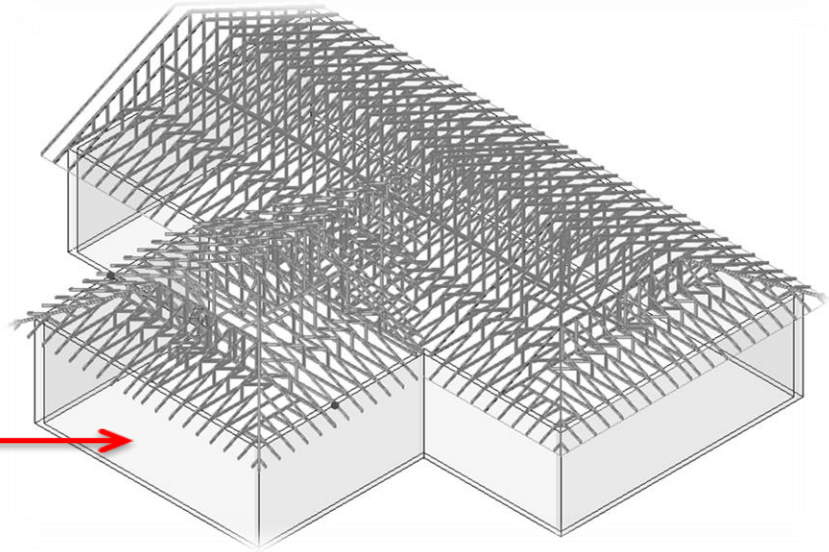
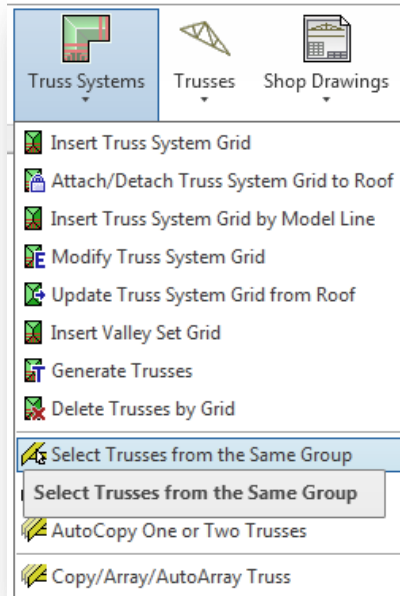
METAL FRAMING TRUSS+

Select Trusses from the Same Group

Select Trusses from the Same Group

Trusses from the same group belong to the same grid and the same type.

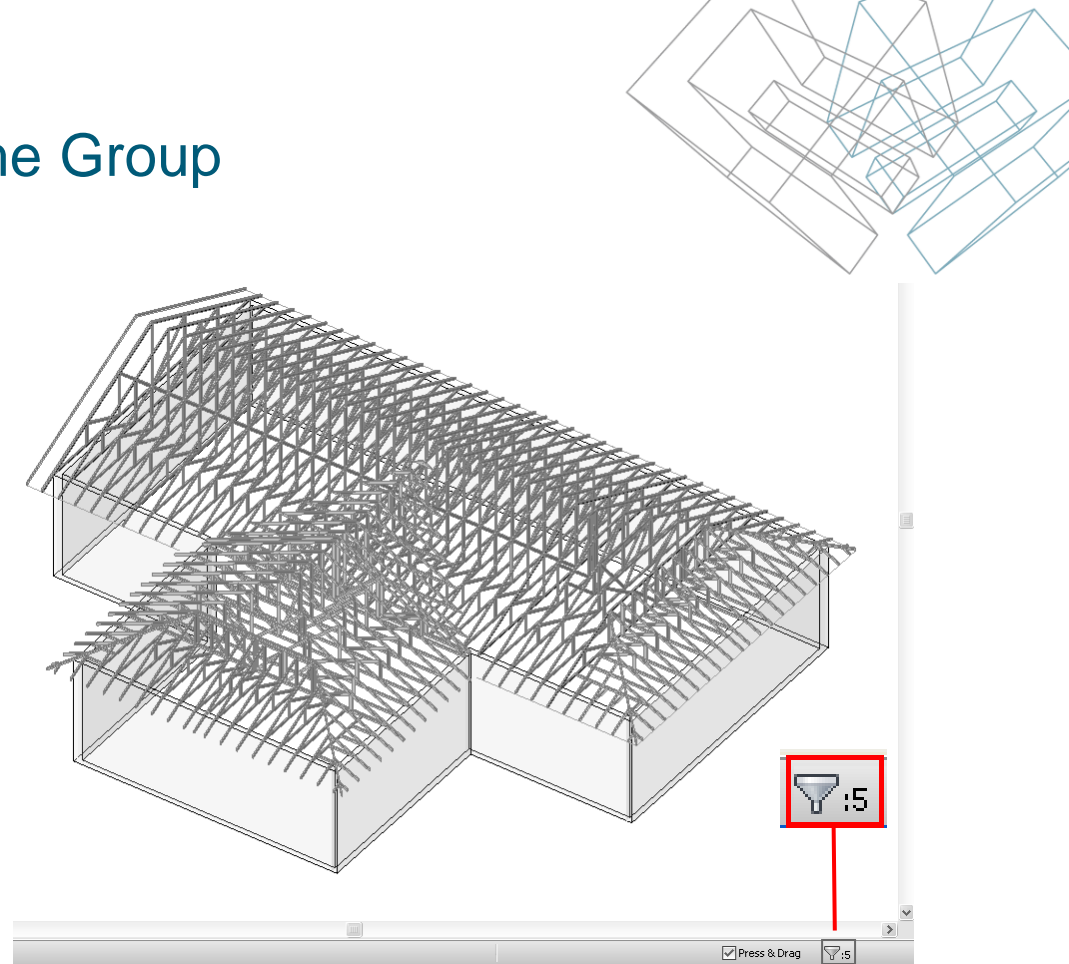
- Select Truss.
- Choose *Select Trusses from the Same Group* from “Truss+” menu.



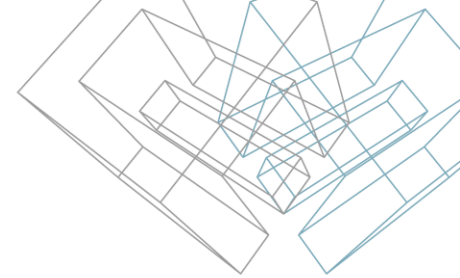
Select Trusses from the Same Group

- The selected trusses from the same group are not visible because of Revit bug.
- The sign showing selected trusses is the filter which shows the number of selected elements.

(The filter is shown down below in the right corner.)

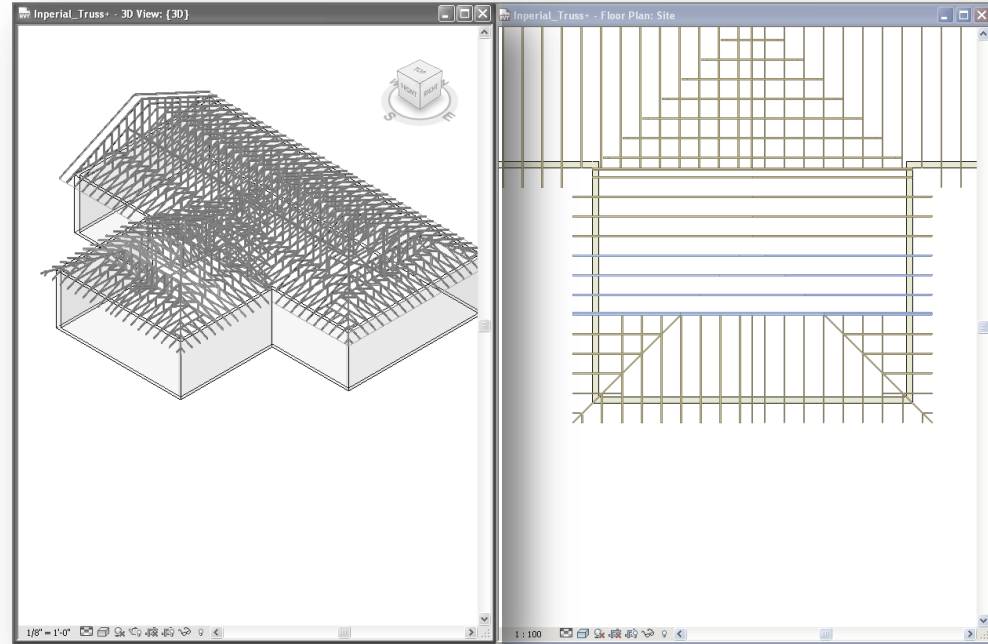


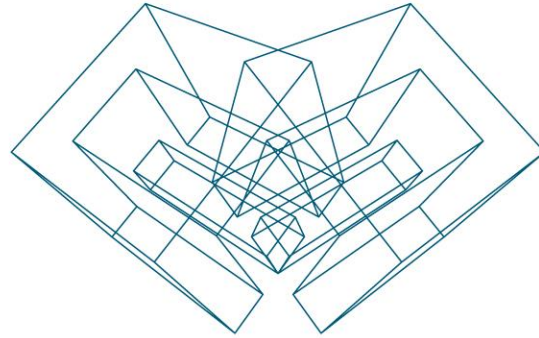
Select Trusses from the Same Group



There is another possibility to see the selected trusses.

- Click *Tile Windows* (another view should open) and make one of the view active or just open another view.





AGA CAD Ltd

T: +370 618 55671 | E: support@aga-cad.com | W: www.aga-cad.com