

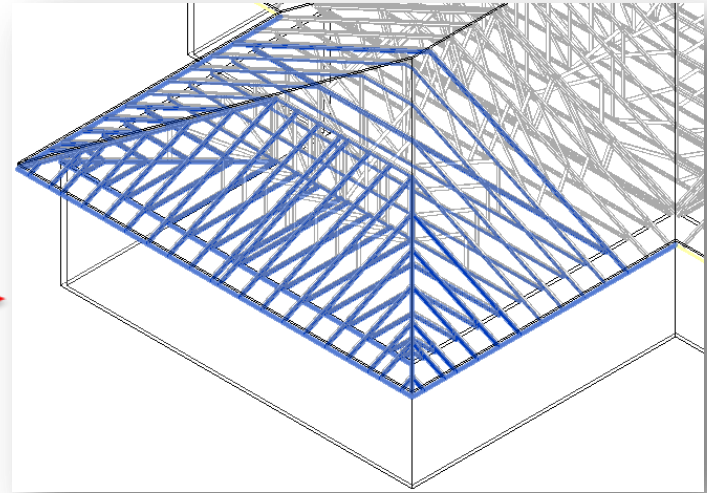
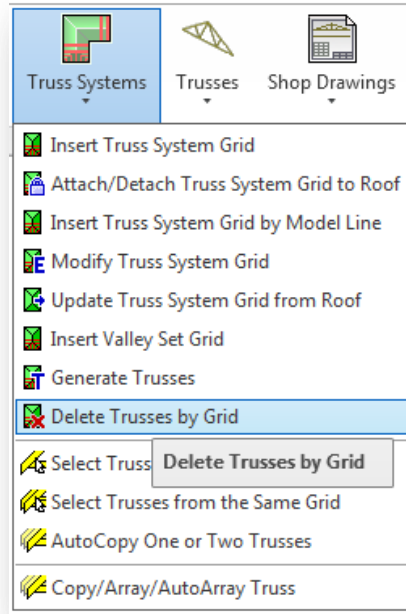


# METAL FRAMING TRUSS+

## Delete Trusses by Grid

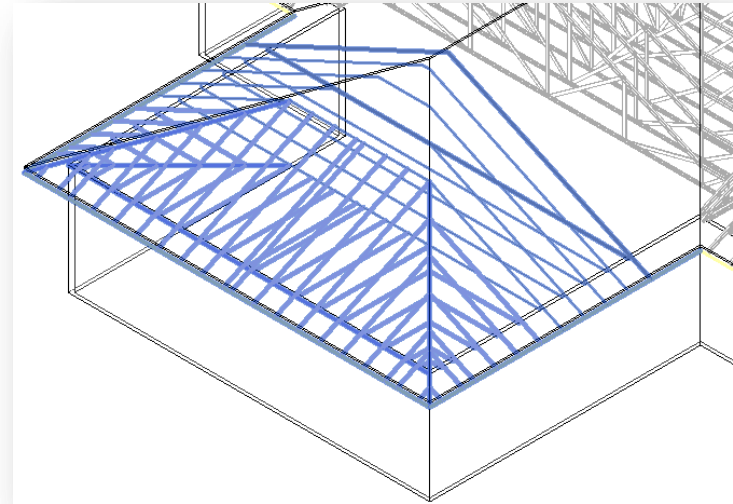
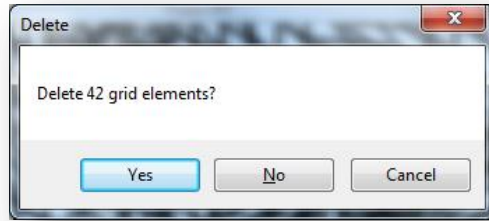
# Delete Trusses by Grid

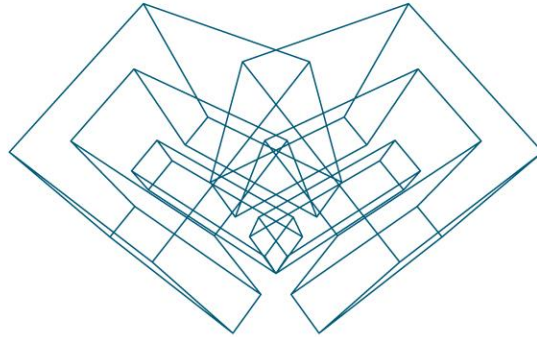
- Select grids (it's possible to select several grids at a time).
- Choose *Delete Trusses by Grid* from “Truss+” menu.



# Delete Trusses by Grid

- A dialogue window will open.
- To delete trusses select Yes.
- If an error message 'Select grid(s)' occurs, it means that the user hasn't selected grids before trying to delete trusses.





AGA CAD Ltd

T: +370 618 55671 | E: [support@aga-cad.com](mailto:support@aga-cad.com) | W: [www.aga-cad.com](http://www.aga-cad.com)