



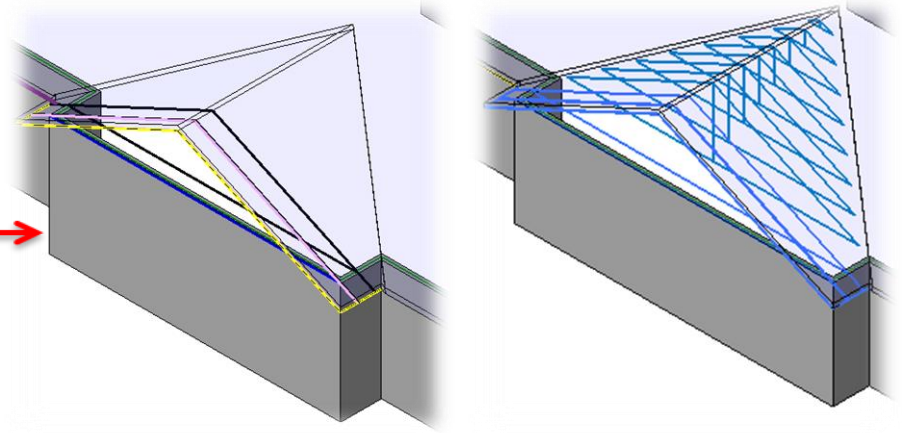
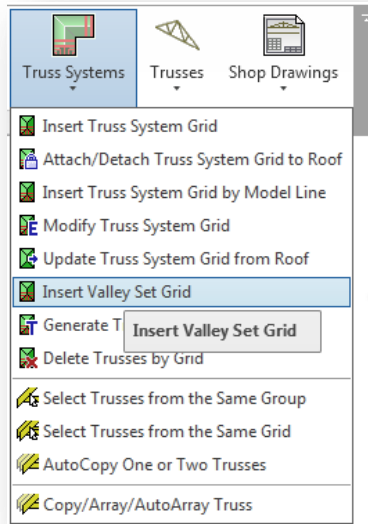
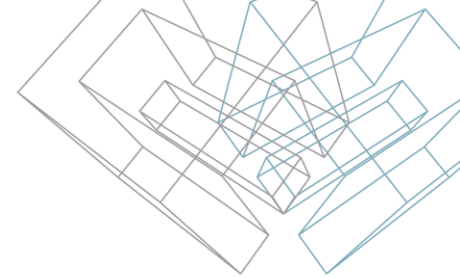
METAL FRAMING TRUSS+

Insert Valley Set Grid

Insert Valley Set Grid

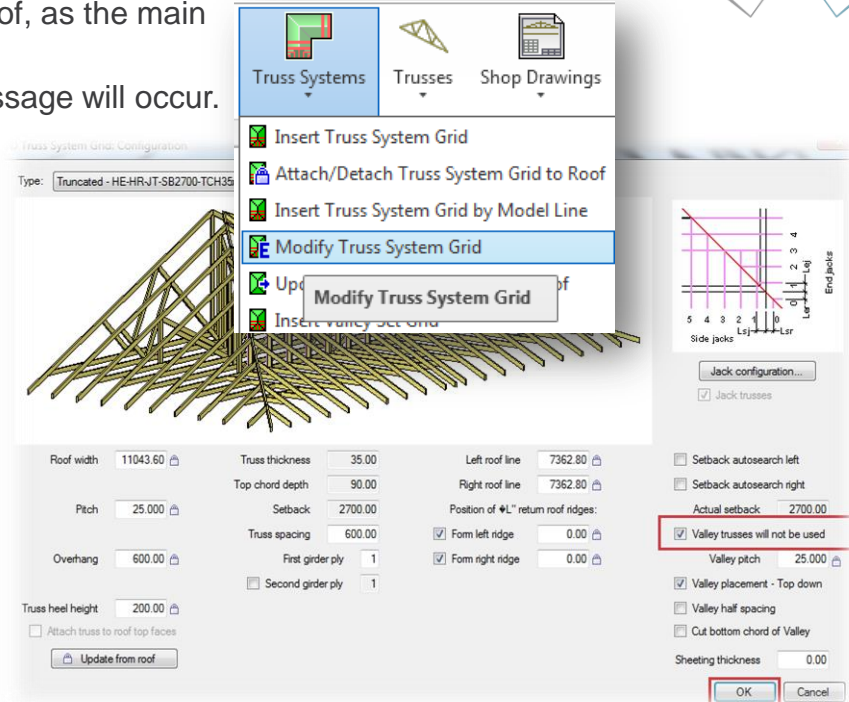
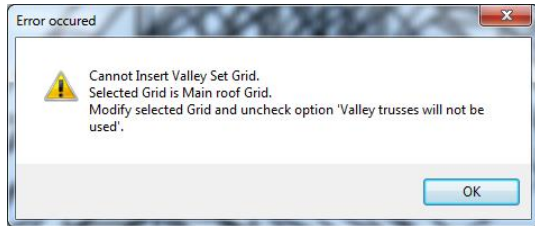
- Select a truss system grid (which doesn't belong to the main roof).
- Choose *Insert Valley Set Grid* directly from “Truss+” menu.
- A valley set grid will be automatically created.

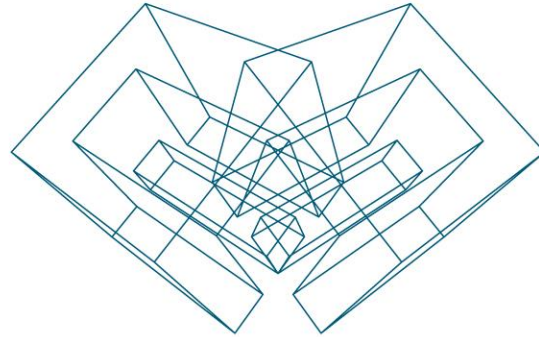
Note: Roof with a lower ridge is not the main roof.



Insert Valley Set Grid

- It's not possible to insert the valley set grid to the main roof, as the main roof doesn't need the valley set grid.
- If the selected grid belongs to the main roof, an error message will occur.
- To change a parameter of the main roof:
 - Click *OK* to close the error message;
 - Select the truss system grid and go to *Modify Truss System Grid*;
 - Uncheck the option *Valley trusses will not be used* and click *OK*.





AGA CAD Ltd

T: +370 618 55671 | E: support@aga-cad.com | W: www.aga-cad.com