

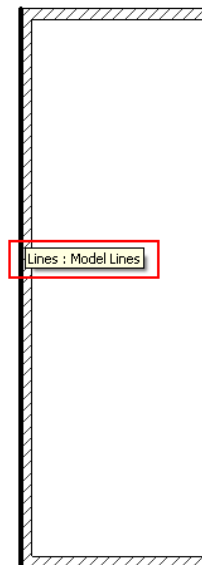
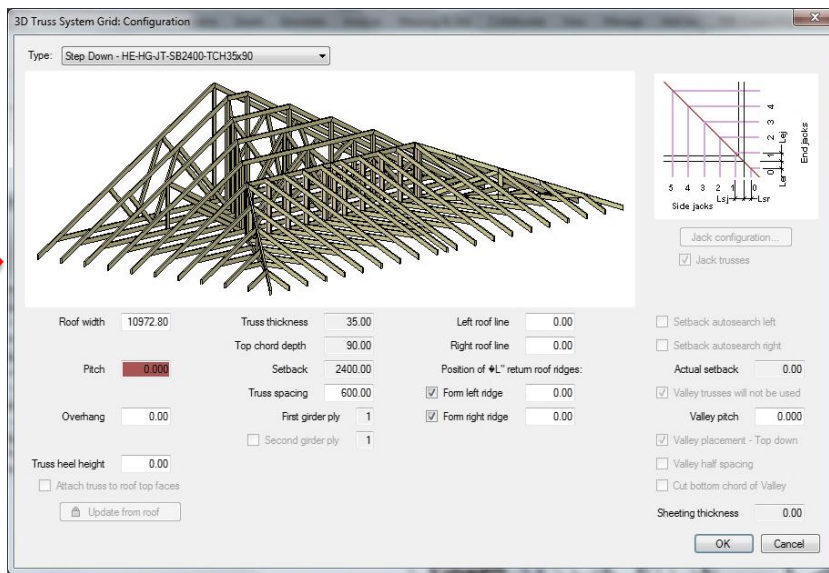
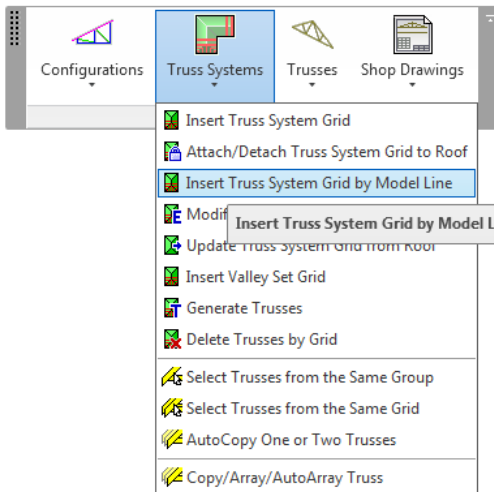


METAL FRAMING TRUSS+

Insert Truss System Grid by Model Line

Insert Truss System Grid by Model Line

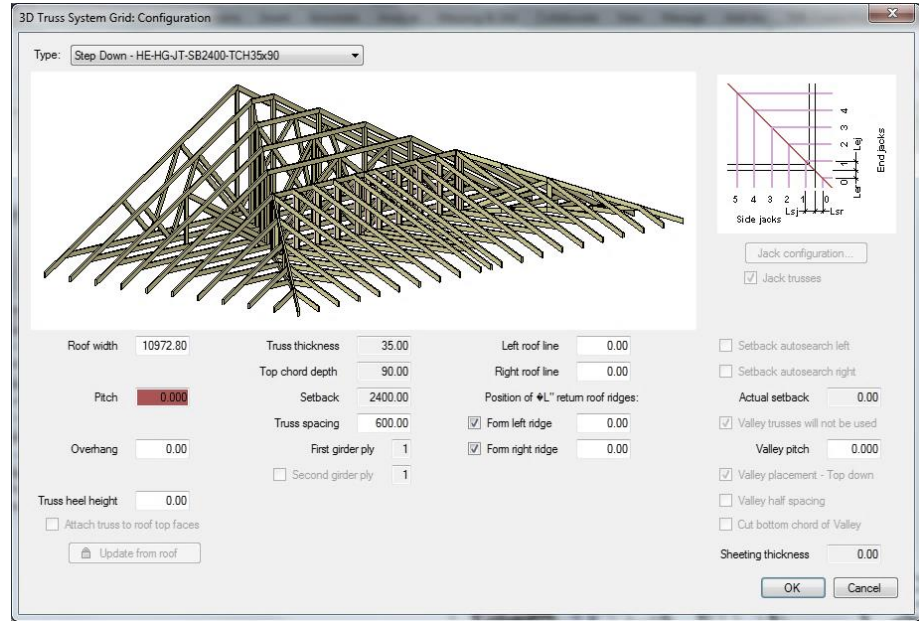
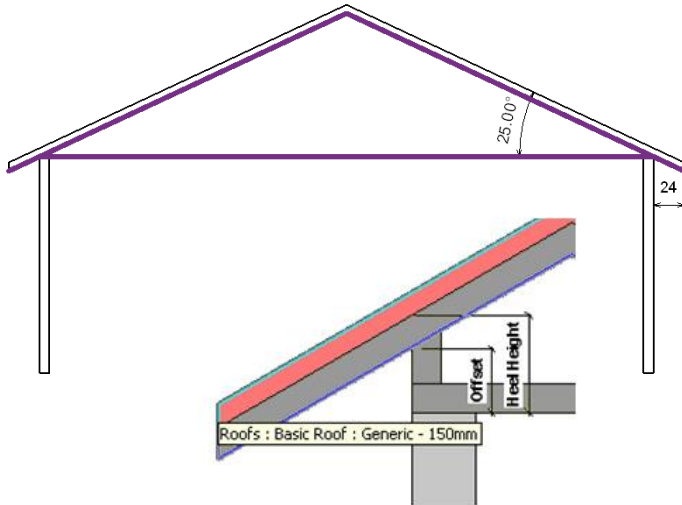
- Insert Model line on the top of the wall.
- Select Model line.
- Choose *Insert Truss System Grid by Model Line* from “Truss+” menu.



Insert Truss System Grid by Model Line

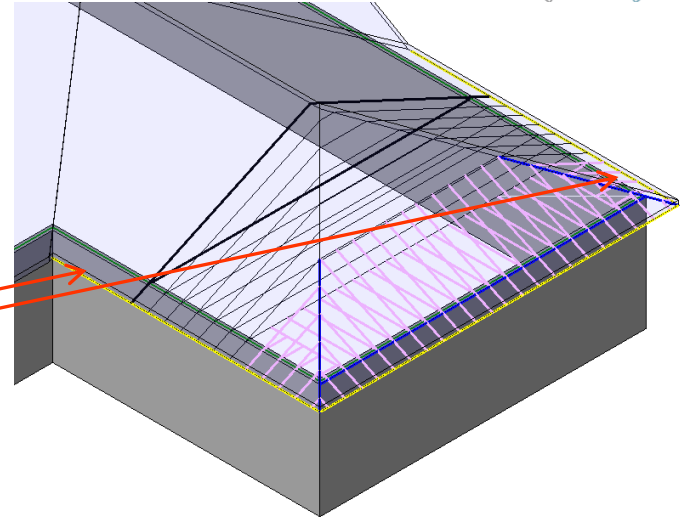
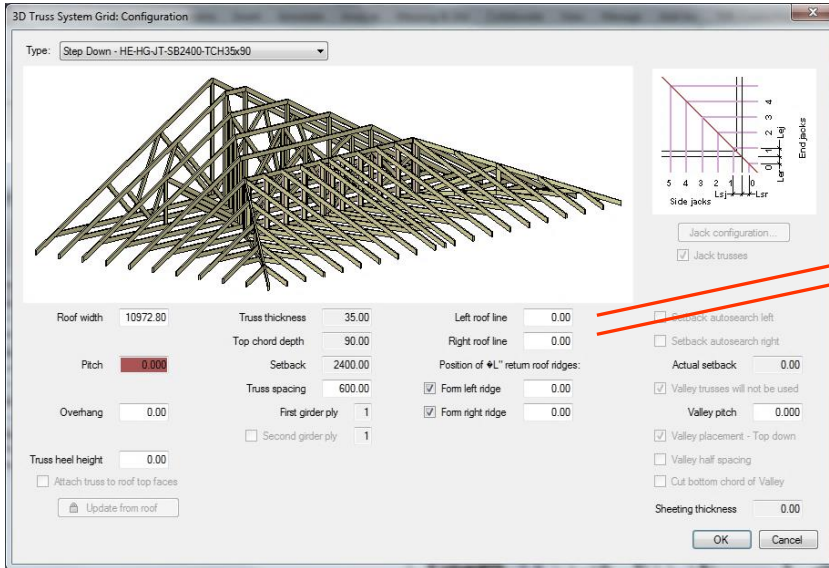
Indicate:

- *Pitch* (slope angle)
- *Overhang*
- *Truss heel height* if needed



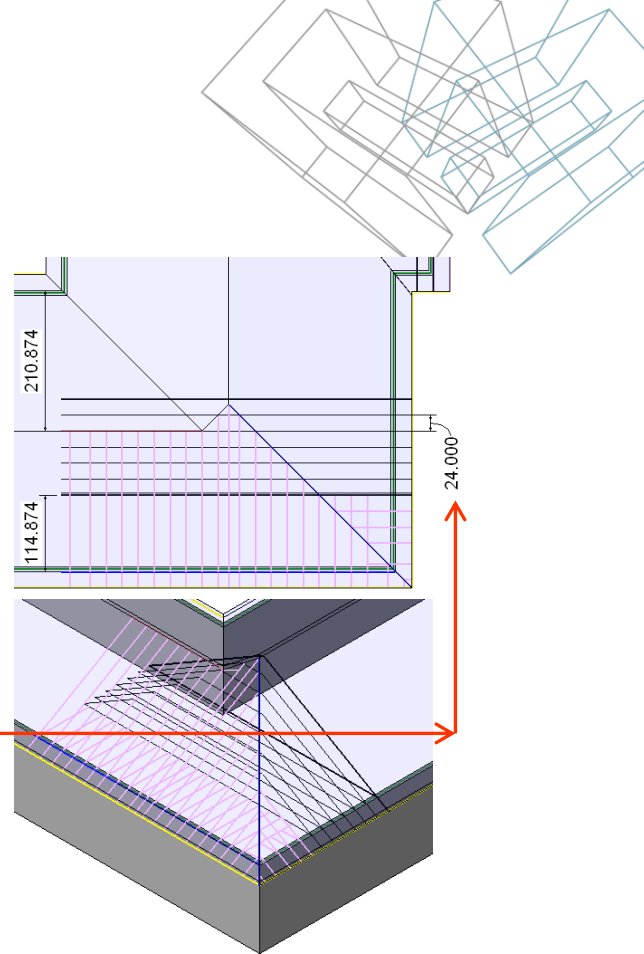
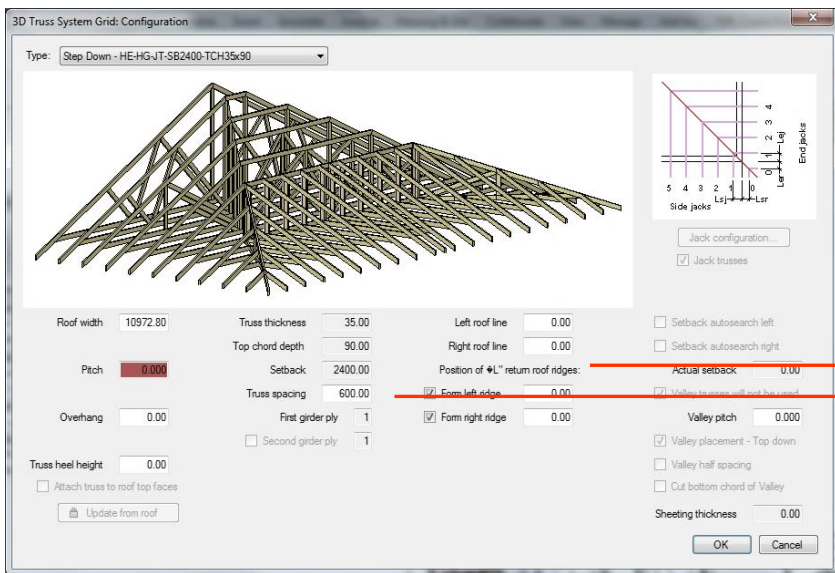
Insert Truss System Grid by Model Line

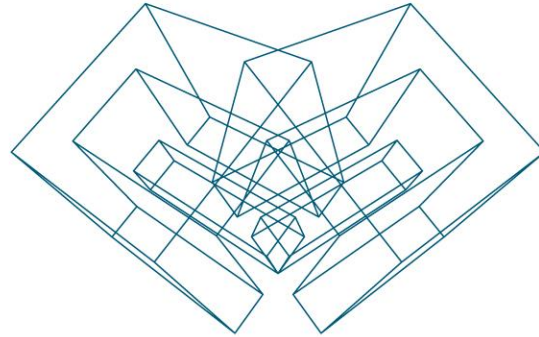
- Length values of *Left roof line* and *Right roof line*, otherwise the overhang on the sides will be equal to zero.



Insert Truss System Grid by Model Line

- Position of “L” return roof ridges
- Truss spacing





AGA CAD Ltd

T: +370 618 55671 | E: support@aga-cad.com | W: www.aga-cad.com