

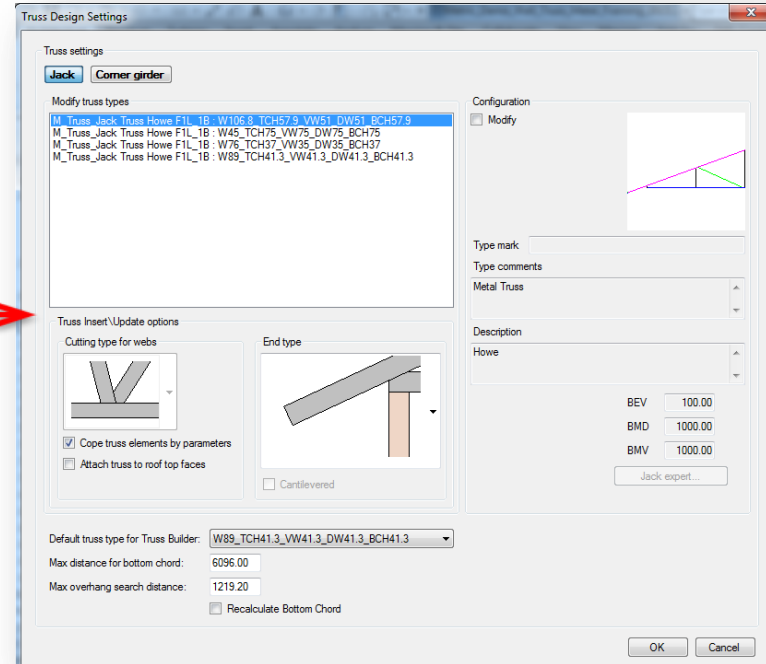
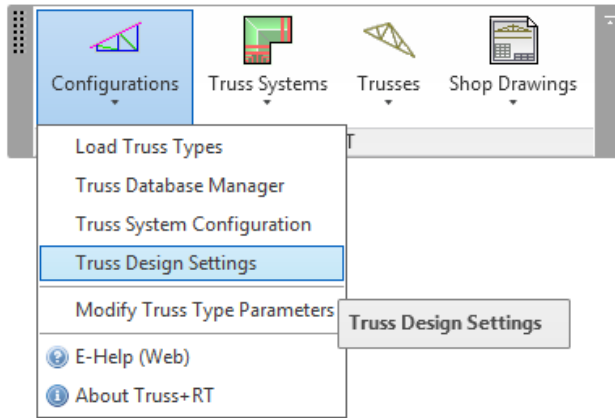


# METAL FRAMING TRUSS+

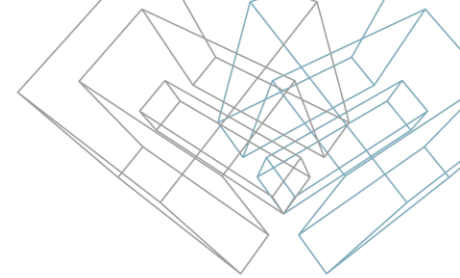
## Truss Design Settings

# Truss Design Settings

- Choose *Truss Design Settings* directly from “Truss+” menu.

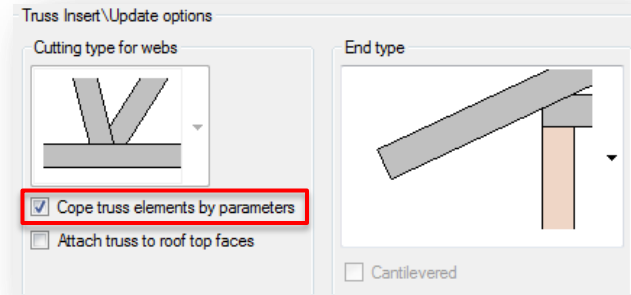
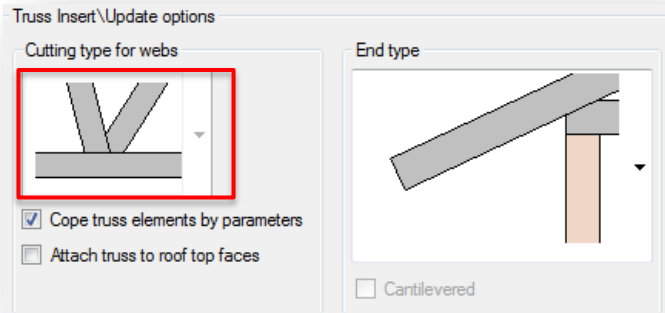


# Truss Design Settings - Truss Insert\Update options



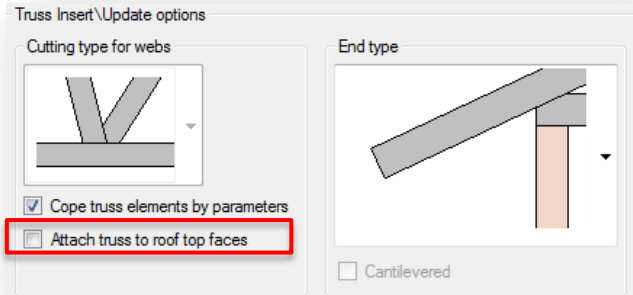
- Select cutting type for webs.

- Cut/Cope truss elements by selected Cut type.

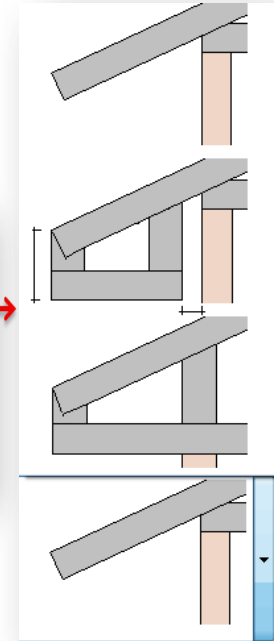
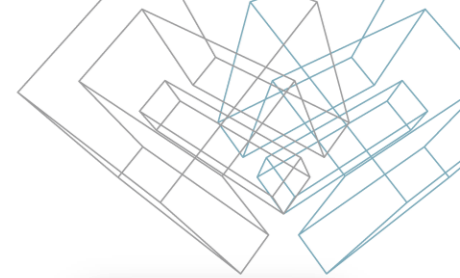
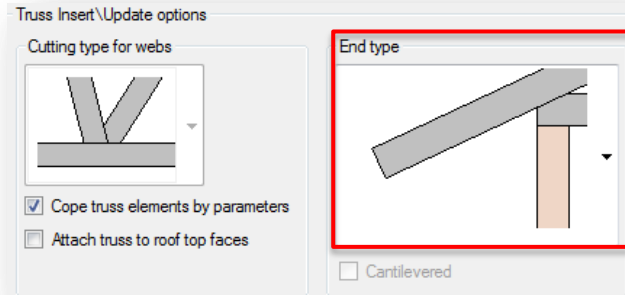


# Truss Design Settings - Truss Insert\Update options

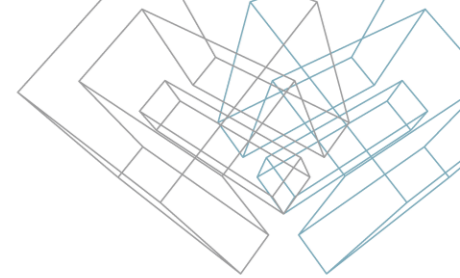
- Attach truss top chord to roof top face. If not – truss top chord will be attached to roof bottom face



- Select truss overhang cutting and framing type:



# Truss Design Settings - Truss Create\Insert\Update options



Default truss type for Truss Builder:

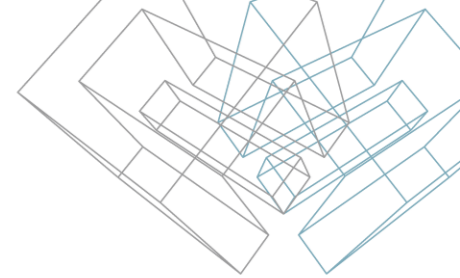
Max distance for bottom chord:

Max overhang search distance:

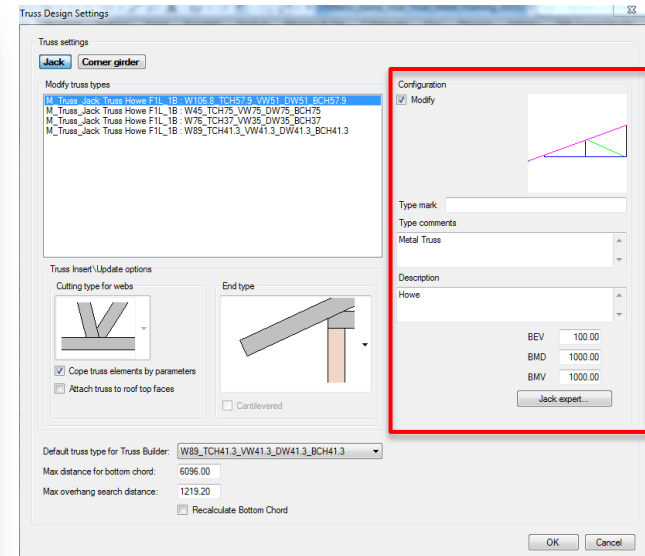
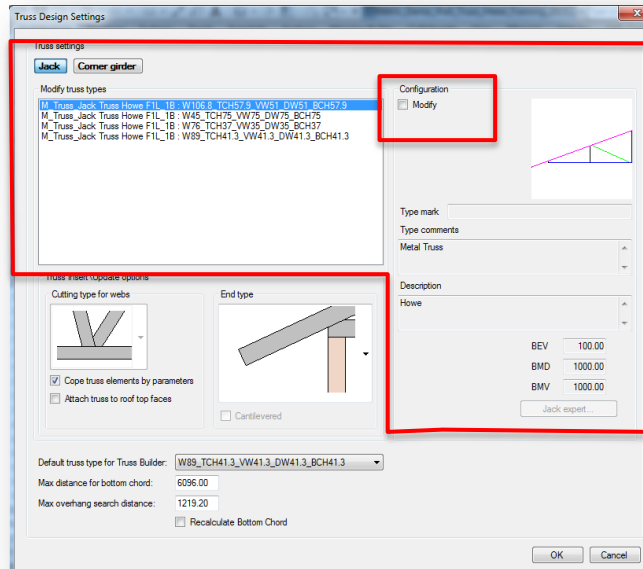
Recalculate Bottom Chord

- Select default truss type to use it when creating new truss family with Truss Builder.
- Maximal length of bottom chord for Truss Builder. When creating new truss family by model line which is longer – bottom chord will be split in two tiles.
- Optimal value of ‘Max overhang search distance’ parameter allows inserting trusses inside a building without overhang. Value must be a little higher than maximal length of overhang in current project.
- Use **Recalculate Bottom Chord** when creating new wood truss family with Truss Builder.

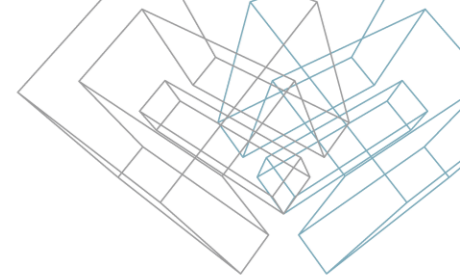
# Truss Design Settings – Predefine Web Position Rules for Jacks and Corner Girders



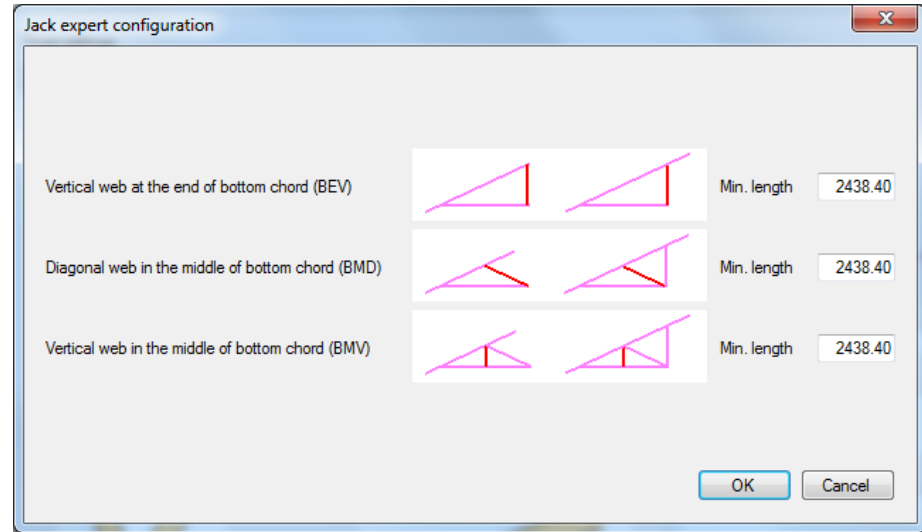
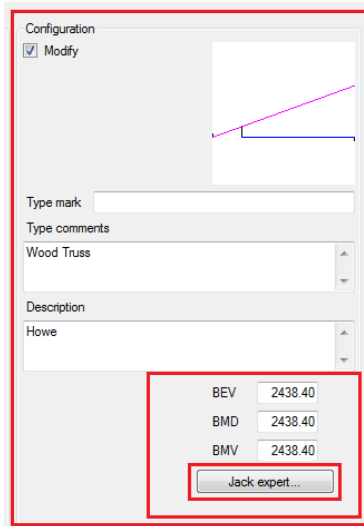
- Select truss type in Jack or Corner girder truss tabs to change web position rules and click *Modify* button.

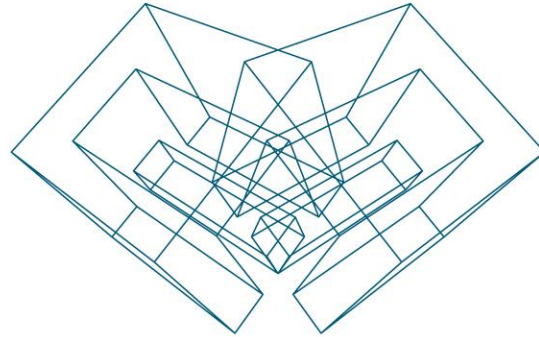


# Truss Design Settings – Predefine Web Position Rules for Jacks and Corner Girders



- Modify parameters or click on the *Jack expert* button for better understanding of parameters and their values.





AGA CAD Ltd

T: +370 618 55671 | E: [support@aga-cad.com](mailto:support@aga-cad.com) | W: [www.aga-cad.com](http://www.aga-cad.com)